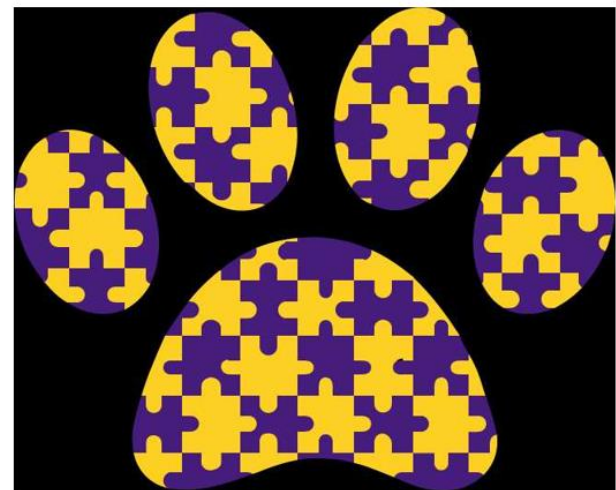


# Team #57: Augmentative and Alternative Communication Diagnostic

## Tool

Steven Amedee and Dennis Truong



Autism | AAC Lab LSU

### Background Information

Individuals with disabilities use Augmentative and Alternative Communication (AAC) to communicate without their voice, these include Parkinson's disease, ALS, cerebral palsy, etc. Speech-language pathologists (SLPs) are often not able to equip a patient with the appropriate device because there is no standardized tool to guide the diagnostic process. This leads to false device choices which in turn leads to failure of use of the device.

### Objective Statement

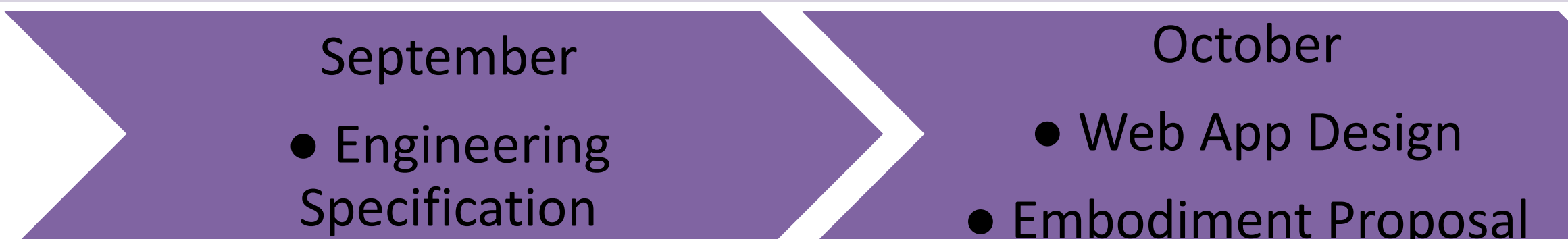
Create a web application that aids in the diagnostic process for an appropriate AAC device.

### Key Features

Detects unsupported files	Displays an error message when the user uploads a file not saved from the assessment
Tracks assessment progress	Progress bar updates according to the amount of questions answered
Detects unsaved work	Displays an alert when the user forgets to save their assessment progress before leaving the page

### Engineering Specifications

Quantitative Specs	Metric
AAC assessment process	≤ 2 hours
Number of app crashes	0
Qualitative Specs	Metric
User Interface	User-friendly



### User Interface

**Augmentative and Alternative Communication Diagnostic Tool**

If you would like to access a previous AAC assessment, please upload the appropriate file below.

No file chosen

Otherwise, click the button below to start a new AAC assessment.

**AAC Assessment Summary**

Name of Patient: \_\_\_\_\_  
Date: \_\_\_\_\_

**Motor Skills & Access Methods Assessment**

**Fine Motor Related to Computer (or Device) Access**

1. Observe the patient using paper and pencil, typewriter, computer, switch, etc. Look at the movements as well as activities and situations. The patient has voluntary, isolated, controlled movements of the following:

Left arm

2a. Does the patient have limitations to range of motion?  
 No

3a. Does the patient have abnormal reflexes or abnormal muscle tone?  
 No

4a. Does the patient have difficulty with accuracy?  
 No

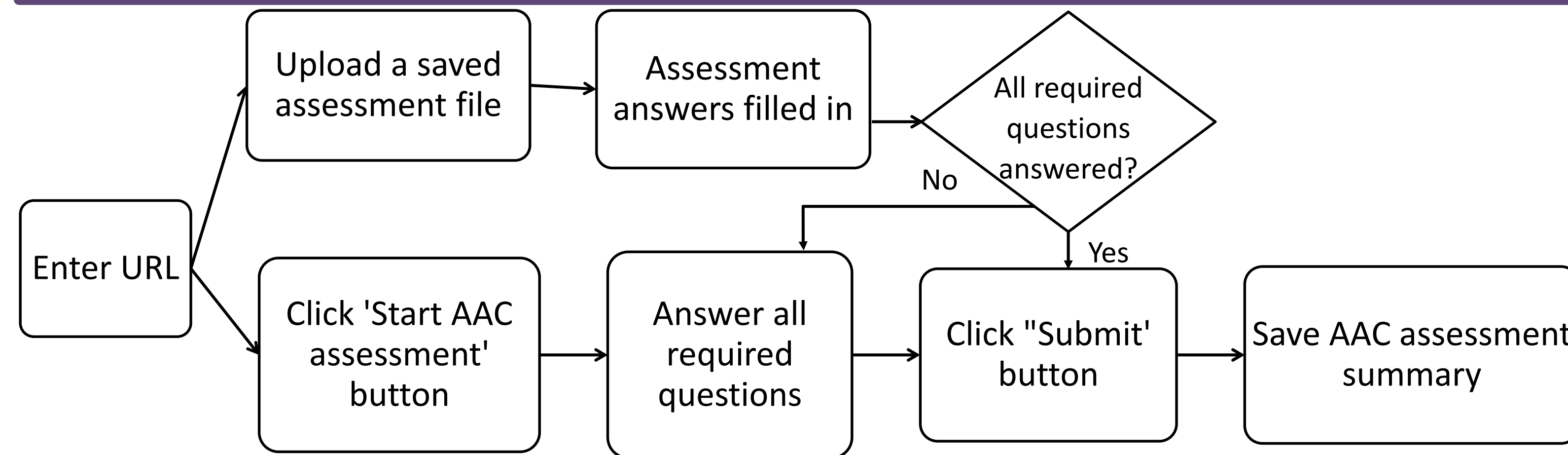
**AAC Diagnostic Tool**

AAC Assessment

00:01:41

Motor Skills & Access Methods Assessment	✓	<b>Motor Skills &amp; Access Methods Assessment</b> 100%
Communication Assessment	✓	<b>Fine Motor Related to Computer (or Device) Access</b> 1. Observe the patient using paper and pencil, typewriter, computer, switch, etc. Look at the movements as well as activities and situations. Does the patient have voluntary, isolated, controlled movements, using the following? (Check all that apply.) <input checked="" type="checkbox"/> Left hand <input type="checkbox"/> Right hand <input type="checkbox"/> Eye(s) <input type="checkbox"/> Left arm <input type="checkbox"/> Right arm <input type="checkbox"/> Head <input type="checkbox"/> Left leg <input type="checkbox"/> Right leg <input type="checkbox"/> Mouth <input type="checkbox"/> Left foot <input type="checkbox"/> Right foot <input type="checkbox"/> Tongue <input type="checkbox"/> Finger(s) <input type="checkbox"/> Eyebrows <input type="checkbox"/> Other
Recreation & Leisure Assessment	✓	
Seating & Positioning Assessment	✓	
Vision Status	✓	
Audiological Status Assessment	✓	
Comments		2a. Does the patient have limitations to range of motion? <input type="radio"/> Yes <input checked="" type="radio"/> No 2b. Describe the specific range in which the patient has the most motor control. (Optional) <input type="text" value="Enter comments here"/>

### Program Flowchart



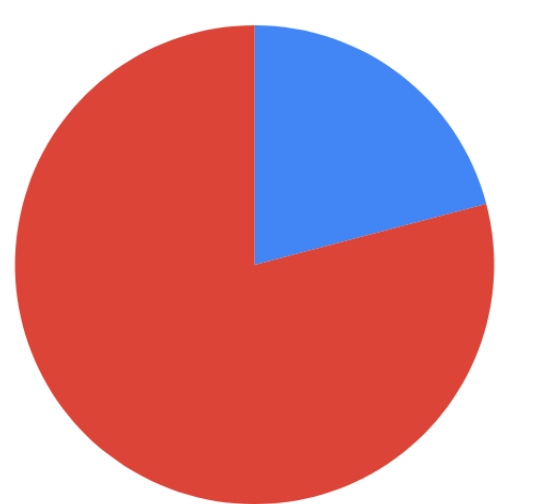
### Technology Stack



### Budget Management

Total Amount: \$100

- JIRA Software - \$20.9
- Leftover Expenses - \$79.1



Sponsors: Dr. Daphne Hartzheim

Advisers: Dr. Jerry Trahan

