
LSU BOARD OF SUPERVISORS MEETING

Board Room, University Administration Building
3810 West Lakeshore Drive, Baton Rouge, LA 70808
October 20, 2023 | 10:00 a.m. CT

- I. Board Professional Development (9:15 a.m. in Board Conference Room 104-A)
- II. Call to Order and Roll Call
- III. Invocation and Pledge of Allegiance
- IV. Public Comment
- V. Committee Meetings
 - A. Research and Agricultural Extension
 1. Cybersecurity Presentation
 - B. Academic Committee
 1. Request from LSU Eunice to Establish a Certificate of General Studies
 2. Consent Agenda
 - a. Request from LSU Shreveport for Continued Authorization of the Red River Watershed Management Institute
 - b. Request from LSU Health Sciences Center - New Orleans to Terminate the Early Intervention Institute
 - c. Request from LSU Shreveport to Split the Department of Management and Marketing into the Department of Management and Entrepreneurship and the Department of Marketing and Information Systems
 - d. Request from LSU Alexandria to Terminate the Certificate of Applied Science in Pharmacy Technology
 - C. Property & Facilities Committee
 1. Request from LSU-Alexandria to Approve Land Lease to the Alexandria Museum of Art in Order to Display Decommissioned Tracked Military Vehicle on Campus
 2. Request from LSU A&M to Consent to an Assignment of Lease of Delta Zeta Sorority House to the National Housing Chapter
 3. Request from LSU-HCSD to Approve an Act 959 Project Relating to the Outpatient Clinic Building and Main Hospital and Emergency Entrances
 4. Request from LSUHSC-NO to Amend the Prior Approval of a Request to Approve the Purchase of Land in Square 440, First District, New Orleans
 5. Utilities Modernization Update Presentation
 - D. Athletics Committee
 1. Request from LSU Athletics to Approve Amendment to Employment Agreement for Baseball Head Coach
 - E. Risk Management Committee (8:00 a.m. in UAB Board Conference Room 104-A)
 1. Action Plan Status Update
 2. FY 2023 Annual Report

The Board or its Committees may enter into Executive Session in accordance with the provisions of LA R.S. 42:17

- VI. Reconvene Board Meeting
- VII. Approval of Meeting Minutes from the September 8, 2023 Board Meeting
- VIII. Personnel Actions Requiring Board Approval
- IX. Reports to the Board
 - A. LSU Supplier Diversity Spend Report for Twelve-Month Period Ending June 30, 2023
 - B. Facility Summary Reports
 - 1. Transfers of Title Immovable Property
 - 2. Approval of Requests for Timber Sales Report
 - 3. Capital Improvements Projects above \$175,000 Report
 - 4. Design Contracts Report
 - 5. Foundation Construction Related Agreements
 - 6. Grants of Mineral Rights
 - 7. Other Agreements and Approval Requests
 - 8. PM60 Projects \$75,000 to \$175,000 Report
 - 9. Property Leases Reports
 - 10. Schematic Design Report
 - 11. Servitudes Report
- X. Reports from Faculty Advisors and Staff Advisors
- XI. President's Report
- XII. Approval of Committee Recommendations
- XIII. Chair's Report
- XIV. Adjournment

The Board or its Committees may enter into Executive Session in accordance with the provisions of LA R.S. 42:17



Board of Supervisors

RESEARCH & AGRICULTURAL EXTENSION COMMITTEE

BOARD OF SUPERVISORS MEETING | OCTOBER 20, 2023

The LSU logo is displayed in a bold, yellow, sans-serif font. The letters are thick and closely spaced, with the 'S' being particularly prominent. The background of the entire slide is a dark blue overlay on a photograph of graduates in caps and gowns, some of whom are raising their caps in celebration.

LSU

Cybersecurity

Initiatives, Efforts, and Overview

October 20, 2023

Scholarship First, Students Always, **Forever LSU.**

INTRODUCTIONS

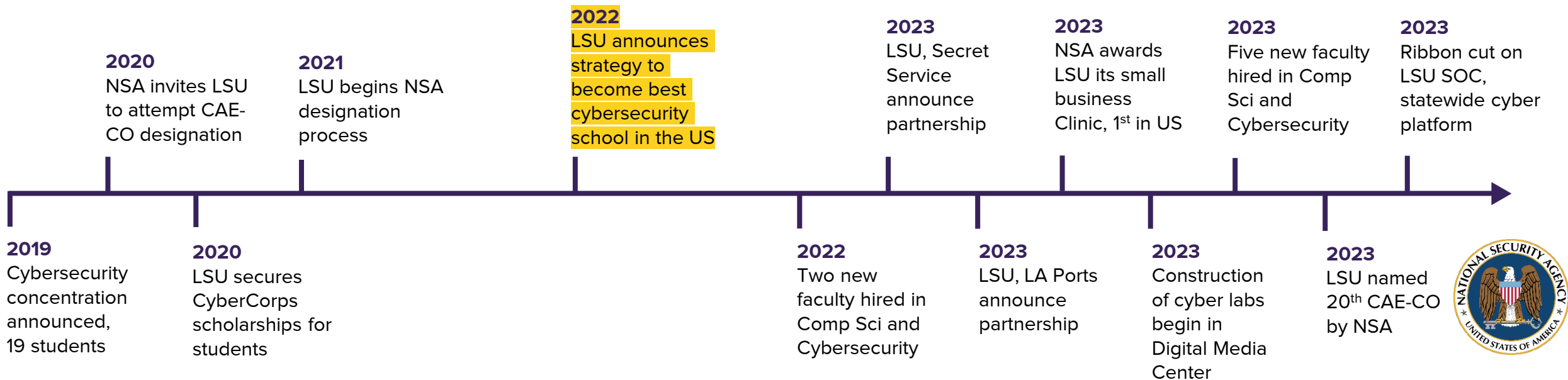
Dr. Golden G. Richard III

- Professor of Computer Science and Engineering, College of Engineering
- Director, LSU Cyber Center
- Associate Director for Cybersecurity, Center for Computation and Technology
- Website: <https://cct.lsu.edu/~golden>
- Email: golden@cct.lsu.edu

Greg Trahan

- Director of Economic Development, Office of Research & Economic Development
- Special Advisor, Cyber Initiatives
- Commissioner, Governor's Cybersecurity Commission (*Chair, Workforce & Business Development*)

HOW WE GOT HERE AND WHERE WE'RE GOING



ON THE HORIZON...

- Continued student and faculty growth
- Cyber-physical labs, facilities, and projects
- New partnerships with federal agencies, industry
- More announcements, wins, and national recognition

CHALLENGES AND AN OPPORTUNITY

Cybersecurity impacts everyone: individuals, businesses, schools, government agencies, national security.

750,000

Estimated open cybersecurity positions in the U.S.

LSU is producing the most talented and capable cybersecurity students in the nation.

WHERE OUR RECENT GRADUATES WORK



CYBERCORPS: SCHOLARSHIP FOR SERVICE



- Full-ride scholarships for students at all levels: B.S., M.S., Ph.D.
- Every student conducts research in cybersecurity
- \$4M grant from National Science Foundation pays for this effort

2X

Growth of cohort over past 18 months, making LSU one of the largest student cohorts in the U.S.

\$30-40,000

Size of the scholarship for undergraduate and graduate students

NSA DESIGNATION: ELITE COMPANY

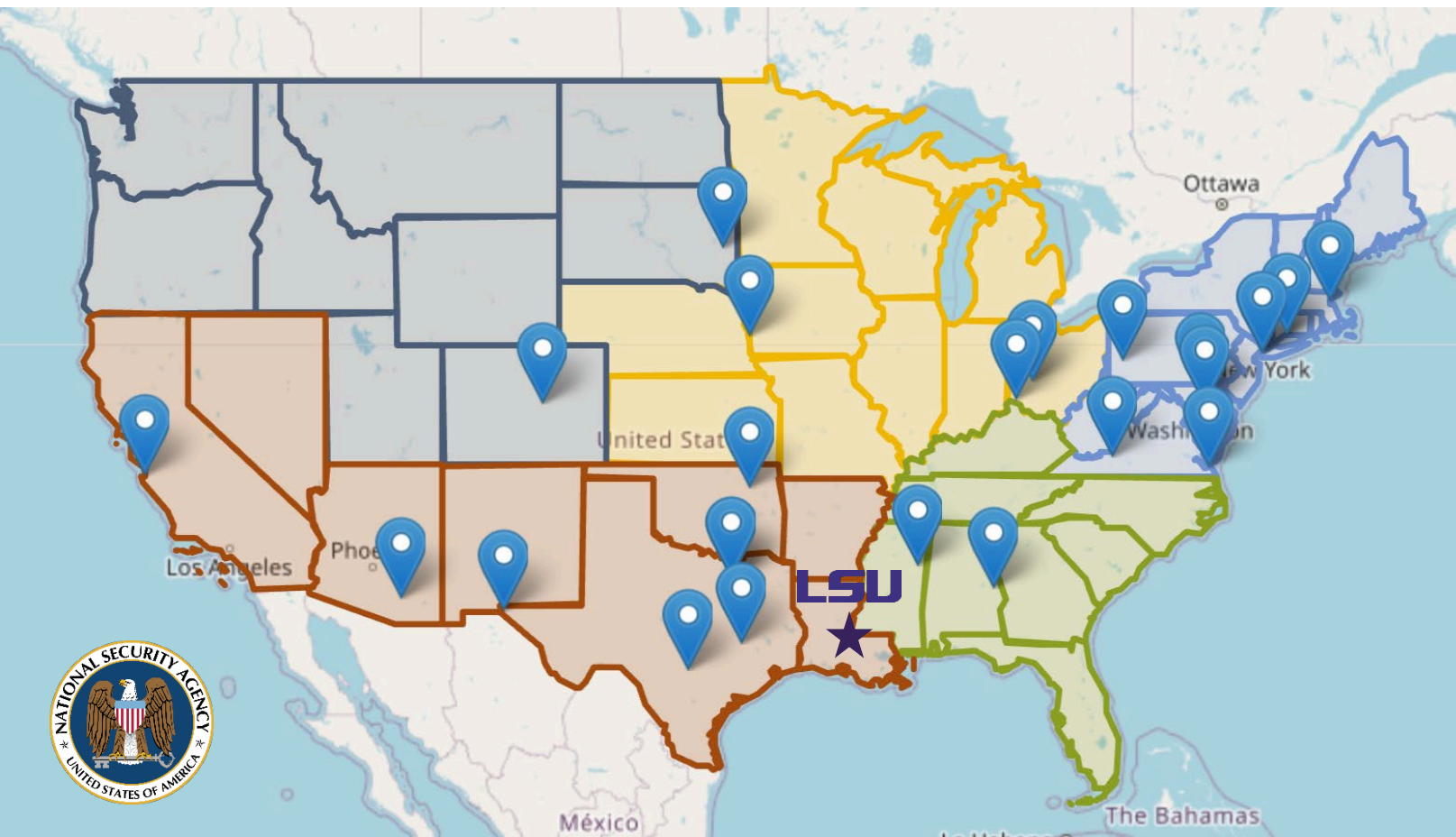
Awarded in 2022, the National Security Agency designated LSU as their newest Center of Academic Excellence in Cyber Operations (CAE-CO), the agency's highest and most technical academic achievement for universities.

19

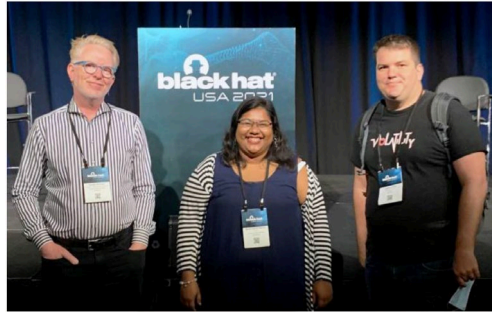
Number of other schools nationwide who have secured the CAE-CO designation

1

Universities invited to apply for designation since 2020: LSU



PARTNERSHIPS



CYBER WIN: NSA SELECTS LSU TO BUILD CYBERSECURITY CLINIC TO SUPPORT SMALL BUSINESSES IN LOUISIANA

\$1.5 million award from the National Security Agency will establish the LSU Cybersecurity Clinic to help small businesses in Louisiana prevent, detect and respond to cyberattacks. LSU was chosen among more than 400 eligible institutions of higher education in the United States.

5

Largest ports in Louisiana, now in agreement with LSU to work on cyber research and talent development

7

New faculty hired in Computer Science and Cybersecurity since 2021

PEOPLE



3X

Growth in enrollment in
Computer Science since
2013

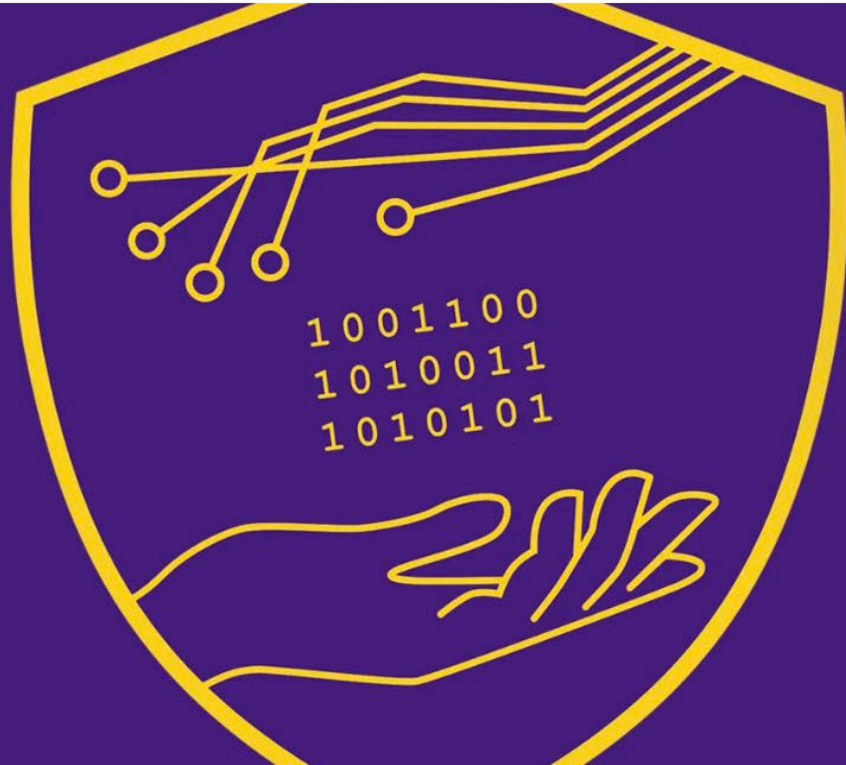


350+

Students now in the
Cybersecurity Concentration

LEARN MORE

**WELCOME TO THE LSU
CYBER CENTER—
PROTECTION THROUGH
PROWESS**



QUESTIONS?



Board of Supervisors

ACADEMIC COMMITTEE

BOARD OF SUPERVISORS MEETING | OCTOBER 20, 2023



Board of Supervisors

Request from LSU Eunice to Establish a Certificate of General Studies

Date: October 20, 2023

1. Bylaw Citation

Pursuant to Article VII, Section 1, Paragraph B of the Bylaws of the Louisiana State University Board of Supervisors, this matter is a significant board matter.

- B. The Board shall approve any new academic program resulting in the awarding of a degree, certificate, or credential, as well as any changes of degree designation or termination of degree programs. The Board shall approve any new institution, department, research center, or institute, or required reauthorization of such.

2. Summary of Matter

LSU Eunice (LSUE) requests establishment of a Certificate of General Studies - a 30-hour academic offering designed to provide students with a broad foundation of fundamental academic skills for personal growth and preparation for further collegiate study. This certificate provides an avenue for students who do not wish to complete a 60-hour associate degree program but would rather select courses that help them meet admission requirements or prerequisites for a four-year transfer institution. Students will take 24 credit hours of general education courses and six credit hours of college-level electives.

Students who earn the Certificate of General Studies will have a broad base of knowledge and set of life skills that are more desirable to potential employers. While the certificate does not lead to a specific occupation, it does lead to skills desired by employers in the LSUE service area. This academic offering also aligns with the Louisiana Board of Regents' Master Plan attainment goal of 60% of all working-age adults (ages 25-64) to hold a degree or high-value credential by 2030.

Ten other two-year schools in Louisiana currently offer a Certificate of General Studies as this is a student success strategy for students who wish to explore college offerings and who wish to move on to a baccalaureate degree at a four-year institution. The program at LSUE will be offered both online and on-campus to serve a wide variety of students in the state. LSUE currently only offers the full, 60-hour associate degree in general studies.

3. Review of Business Plan

The Certificate of General Studies will be housed in the Division of Liberal Arts. LSUE will utilize the current courses offered for the Associate of Arts in General Studies.

4. Fiscal Impact

This program allows LSUE to capture different populations of students who either do not wish to finish the full associate degree as they intend to transfer to a four-year institution as soon as they reach the minimum admission requirements for transfer or who leave the university with enough applicable credit hours to receive the credential. There will not be a substantial increase in new enrollments at the institution for this program, but LSUE will be able to increase

completion rates for those students who currently end up leaving the institution without a credential. This proposal thus aligns with the BOR Master Plan objectives by providing Louisiana residents with a high-value credential that will either make them appealing to local workforce or provides them a mechanism for transfer to a four-year institution. Based on AY 22-23 students who left LSUE without a credential but with 30-59 credit hours in applicable coursework, the institution anticipates 350-500 completers each year. No additional resources are needed to offer this program.

5. Description of Competitive Process

N/A

6. Review of Legal Documents

N/A

7. Parties of Interest

N/A

8. Related Transactions

N/A

9. Conflicts of Interest

N/A

10. Attachments

RESOLUTION

NOW, THEREFORE, BE IT RESOLVED that the Board of Supervisors of Louisiana State University and Agricultural & Mechanical College does hereby approve the request from LSU Eunice to establish the Certificate of General Studies.



Board of Supervisors

Request from LSU Shreveport for Continued Authorization of the Red River Watershed Management Institute

Date: October 20, 2023

1. Bylaw Citation

Pursuant to Article VII, Section 1, Paragraph B of the Bylaws of the Louisiana State University Board of Supervisors, this matter is a significant board matter.

- B. The Board shall approve any new academic program resulting in the awarding of a degree, certificate, or credential, as well as any changes of degree designation or termination of degree programs. The Board shall approve any new institution, department, research center, or institute, or required reauthorization of such.

2. Summary of Matter

LSU Shreveport (LSUS) requests continued authorization of the Red River Watershed Management Institute for another five years. The Board of Regents granted initial approval on July 20, 2001 and continued approvals in 2003, 2008, 2013, and 2018.

The Red River Watershed Management Institute (RRWMI) is a unique multidisciplinary educational and research endeavor with a 585-acre wetland (Red River Education and Research Park), Anderson Watershed Research Station, state-of-the-art water monitoring technology, GIS laboratory, and environmental assessment and monitoring laboratory. The Institute was established to conduct research on the Red River Watershed, establish public education and outreach programs related to the wetlands in this watershed, and recommend and facilitate management alternatives for the watershed. RRWMI has been integral in bringing together university, state, parish, city, and industry to investigate water issues in the Red River Watershed region. The Institute continues monitoring groundwater and surface water in the region. Data from the RRWMI has helped state water planners in assessing aquifer monitoring approaches and assisting local and parish officials in long-term planning of water resources. The RRWMI has also been involved in monitoring and investigating ecological impacts and control measures related to invasive aquatic plants.

Ongoing activities of the RRWMI include: monitoring groundwater in Caddo Parish and Bossier Parish, participation in the Red River Flood Technical Committee, collaborating with the Caddo Lake Institute to update ecological inventories and understand lake sediment and flow dynamics, working with the US Army Corps of Engineers to understand sediment dynamics in the Red River and explore educational outreach to middle and high school students, hosting an EPA Radnet air quality monitoring site on campus, establishing coursework and research experiences for undergraduate and graduate students at LSUS, supporting outdoor and indoor laboratory opportunities for the study of ecology, watersheds, and ecosystems, and providing workshops to the public. Furthermore, the RRWMI faculty and staff document new state plants in the Red River Floristic Survey and publish and present findings of their research extensively.

Goals for the next five years align with the strategic challenge of bridging the coast, energy, and environment as mentioned in the LSUS Strategic Plan of 2018. Strategies to accomplish this include:

- Use the RRWMI to promote awareness and appreciation of coastal and freshwater ecosystems locally and within the state;
- Contribute scientifically-proficient LSUS students and graduates to the environmental workforce;
- Develop RRWMI into a regional leader in the study of freshwater ecosystems and their conservation, as well as the study and impact of floodplain mapping;
- Leverage the Anderson Watershed Research Station and surrounding land for scientific research, study, and possible controlled recreational purposes;
- Developing global warming research that will contribute to the knowledgebase related to the correlation between the occurrence of floods and global warming; and
- Utilize GIS in the spatial data analysis of water levels and water quality from existing monitoring wells for the effective management of water resources.

3. Review of Business Plan

RRWMI has a number of facilities that enable it to conduct its work on outreach and education. These include offices and display space in the Science Building on the LSUS campus, the Watershed Environmental Laboratory, the Watershed GIS Laboratory, Anderson Watershed Research Station, and Red River Education and Research Park. The RRWMI is comprised of eight faculty and staff, and the unit is housed under the supervision of the Dean of the College of Arts and Sciences.

4. Fiscal Impact

Director Mike Maguigan started in the fall of 2020 has formed connections with USGS, USACE, Caddo Lake Institute, and others that can be used to increase the chances for external funding. Current incorporation of waterways into the LSU and LSUS strategic plans increase the chances for external funding due to need of the RRWMI's work to achieve LSUS' missions. Current targets for external funding include the NSF grants to acquire equipment related to research needs for Caddo Lake and the Red River. There are also plans for external funding through the EPA to test solutions for aquifer recharge, which could involve both Bossier and Caddo Parishes.

Current revenue comes from institutional funds, the Coleman Professorship, and local government, totaling \$91K per year. With the addition of pending revenue from EPA, LDEQ, NSF, USGS, private foundations, and local government, the revenue for the next five years is approximately \$259K a year - more than enough to cover the anticipated expenses of personnel, supplies, equipment, operating expenses, travel, etc.

5. Description of Competitive Process

N/A

6. Review of Legal Documents

N/A

7. Parties of Interest

N/A

8. Related Transactions

N/A

9. Conflicts of Interest

N/A

10. Attachments

RESOLUTION

NOW, THEREFORE, BE IT RESOLVED that the Board of Supervisors of Louisiana State University and Agricultural & Mechanical College does hereby approve the request from LSU Shreveport for continued authorization of the Red River Watershed Management Institute.



Board of Supervisors

Request from LSU Health Sciences Center – New Orleans to Terminate the Early Intervention Institute

Date: October 20, 2023

1. Bylaw Citation

Pursuant to Article VII, Section 1, Paragraph B of the Bylaws of the Louisiana State University Board of Supervisors, this matter is a significant board matter.

- B. The Board shall approve any new academic program resulting in the awarding of a degree, certificate, or credential, as well as any changes of degree designation or termination of degree programs. The Board shall approve any new institution, department, research center, or institute, or required reauthorization of such.

2. Summary of Matter

LSU Health Sciences Center – New Orleans (LSUHSCNO) requests termination of the Early Intervention Institute.

The Developmental Disabilities Act of 2000 (as amended) directs federally authorized University Centers for Excellence in Developmental Disabilities, Education, Research, and Service (UCEDD) to focus on issues faced by people with disabilities and families across the life span. LSUHSCNO's Human Development Center (HDC) is Louisiana's only federally authorized UCEDD. As the recipient of the UCEDD infrastructure grant for the state of Louisiana, the HDC receives approximately \$580,000 per year - and generally leverages between five to eight million dollars annually in additional grants to address issues around diversity, equity, and inclusion that impact individuals with developmental disabilities, their families, and the professionals who serve them.

A major part of the funding the HDC leverages each year is directed toward addressing issues related to early childhood, education, and supporting families of young children with developmental delays and complex medical challenges. HDC is well positioned to continue providing such services in the future. The Early Intervention Institute (EII) is now a redundant administrative structure, which has no staff and has no funded projects or programs.

The Early Intervention Institute received full approval by the Board of Regents in 2013 and was housed within and supported the HDC. The Institute was a focal point for organizing and directing early intervention initiatives to enhance research, training, services, and supports related to young children at risk for or with disabilities and their families on local, state, and national levels. The mission of the Early Intervention Institute was to expand the understanding of early intervention, increase use of effective practices, and improve outcomes for children, birth through age 5, and their families. The HDC currently does this function.

3. Review of Business Plan

Terminating this redundant institute will not affect any ongoing administrative or business functions at HSCNO.

4. Fiscal Impact

There are no fiscal impacts associated with this termination.

5. Description of Competitive Process

Not Applicable

6. Review of Legal Documents

Not Applicable

7. Parties of Interest

Not Applicable

8. Related Transactions

Not Applicable

9. Conflicts of Interest

Not Applicable

10. Attachments

RESOLUTION

NOW, THEREFORE, BE IT RESOLVED that the Board of Supervisors of Louisiana State University and Agricultural & Mechanical College does hereby approve the request from LSU Health Sciences Center - New Orleans to terminate the Early Intervention Institute.



Board of Supervisors

Request from LSU Shreveport to Split the Department of Management and Marketing into the Department of Management and Entrepreneurship and the Department of Marketing and Information Systems

Date: October 20, 2023

1. Bylaw Citation

Pursuant to Article VII, Section 1, Paragraph A of the Bylaws of the Louisiana State University Board of Supervisors, this matter is a significant board matter.

- A. Any matter having a significant or long-term impact, directly or indirectly, on the finances or the academic, educational, research, and service missions of the University or any of its campuses.

2. Summary of Matter

LSU Shreveport requests permission to make organizational changes to its current departmental configuration in the College of Business:

- To split an existing department into two departments, increasing the College of Business from four to five departments.
- Redistribute the faculty of the Department of Management and Marketing into two departments:
 - Management and Entrepreneurship
 - Marketing and Information Systems

The Department of Management and Marketing has grown to be a very large department compared to other departments at LSU Shreveport. There are currently 29 full-time faculty members in this Department. This reassignment creates an opportunity to focus upon the individual needs of the diverse faculty. This proposal creates two distinct departments with different community and academic focuses.

3. Review of Business Plan

Currently, all faculty members and departments in the College of Business share a single administrative assistant, which can continue. The most significant cost will be the course reductions associated with the promotion of a current faculty member to Department Chair, the Department Chair stipend, and the 2/9 salary for summer support. However, the Department in its current structure already has an Associate Chair position, which will be converted to a Chair position. Therefore, the impact of the split in terms of finances and course assignments will only be marginal.

4. Fiscal Impact

There is minimal financial impact with this reallocation. The current department operating budgets can be proportionally reallocated across the new department structure.

5. Description of Competitive Process

Not Applicable

6. Review of Legal Documents

A memo from the associate vice chancellor with approval from the LSUS chancellor and provost is on file in the Office of Academic Affairs.

7. Parties of Interest

Not Applicable

8. Related Transactions

Not Applicable

9. Conflicts of Interest

Not Applicable

RESOLUTION

NOW, THEREFORE, BE IT RESOLVED that the Board of Supervisors of Louisiana State University and Agricultural & Mechanical College does hereby approve the request from LSU Shreveport to split the Department of Management and Marketing into the Department of Management and Entrepreneurship and the Department of Marketing and Information Systems.



Board of Supervisors

Request from LSU Alexandria to Terminate the Certificate of Applied Science in Pharmacy Technology

Date: October 20, 2023

1. Bylaw Citation

Pursuant to Article VII, Section 1, Paragraph B of the Bylaws of the Louisiana State University Board of Supervisors, this matter is a significant board matter.

- B. The Board shall approve any new academic program resulting in the awarding of a degree, certificate, or credential, as well as any changes of degree designation or termination of degree programs. The Board shall approve any new institution, department, research center, or institute, or required reauthorization of such.

2. Summary of Matter

LSU Alexandria (LSUA) requests termination of the Certificate of Applied Science (CAS) in Pharmacy Technology. As part of the annual Board of Regents' Academic Plan process, campuses were asked to provide a list of degree programs and credentials that each campus intended to terminate. LSUA is now following internal routing processes to officially terminate the program.

The program is being terminated due to low enrollment. During AY22-23, a teach out period was provided to the remaining students in the program, and all students have graduated as of Spring 2023. No students can be admitted into the program.

3. Review of Business Plan

Not Applicable

4. Fiscal Impact

There are no fiscal impacts associated with this termination.

5. Description of Competitive Process

Not Applicable

6. Review of Legal Documents

Not Applicable

7. Parties of Interest

Not Applicable

8. Related Transactions

Not Applicable

9. Conflicts of Interest

Not Applicable

10. Attachments

RESOLUTION

NOW, THEREFORE, BE IT RESOLVED that the Board of Supervisors of Louisiana State University and Agricultural & Mechanical College does hereby approve the request from LSU Alexandria to terminate the Certificate of Applied Science in Pharmacy Technology.



Board of Supervisors

PROPERTY & FACILITIES COMMITTEE

BOARD OF SUPERVISORS MEETING | OCTOBER 20, 2023



Board of Supervisors

Request from LSUA to approve Land Lease to the Alexandria Museum of Art in order to display Decommissioned Tracked Military Vehicle on Campus

Date: October 20, 2023

1. Bylaw Citation

Pursuant to Article VII, Section:

1.E.1 the lease is potentially for a term of more than five (5) years;

2. Summary of Matter

In 2006, LSUA selected the "Generals" as its moniker - primarily to be used by its athletic programs - which were only Baseball and Softball at the time. This name was selected due to the significant history of Central Louisiana in the early years of World War II.

In 1940 and 1941, the region was selected to host the Louisiana Maneuvers in which the United States' entry into the European Theater of World War II was planned.

Omar Bradley, Mark Clark, Dwight D. Eisenhower, Walter Krueger, Ben Lear, Lesley J. McNair, and George Patton were among the officers who lived in Alexandria while leading these maneuvers and planning strategy. These men were or would become United States Generals. Their legacy is what LSUA celebrates in its athletic programs.

In 2018, LSUA chose its mascot to be a Bull Terrier named "Tank". The bull terrier was selected in recognition of General George S. Patton's dog, a bull terrier, named Willie. Willie accompanied Gen. Patton to most activities, was at his side daily, and was even considered his "Second in Command" by the General.

To demonstrate the link to the University's military heritage, LSUA is working with the United States Army Donation Program to acquire a decommissioned tracked, military vehicle to put on display in front of The Fort - LSUA's Athletic Facility and home of The Generals. Eligibility into the program requires a museum to officially make the acquisition, as well as own or lease the land on which the vehicle will be displayed. As such, the University is requesting a long-term ground lease of a small plot (as shown in purple) to the Alexandria Museum of Art - an Affiliate of the University which is owned by the LSUA Foundation.

3. Review of Business Plan

Request is for a 99-year ground lease for a certain property with dimensions of 25' x 35', and a total area of 875 sq. ft., located on the LSUA campus as depicted and described in more detail in the attached draft lease, specifically in Exhibit "A". LSUA will maintain responsibility for the upkeep and maintenance of the leased plot.

4. Fiscal Impact

No fiscal impact to any LSU entity. Ground lease is for the sole purpose of acquiring and displaying military vehicle.

5. Description of Competitive Process

Not applicable.

6. Review of Legal Documents

The lease and all exhibits will not be formally accepted until these documents have been prepared and/or reviewed by the University, the LSUA Foundation, and The Alexandria Museum of Art. The LSU Office of General Counsel will have final review and approval prior to lease execution.

7. Parties of Interest

The following parties have an interest in and/or are involved with this transaction.

LSUA
LSUA Foundation
The Alexandria Museum of Art

8. Related Transactions

None.

9. Conflicts of Interest

None.

10. Attachments

- i. DRAFT Ground Lease between LSUA and AMoA

RESOLUTION

NOW, THEREFORE, BE IT RESOLVED, that the Board of Supervisors of Louisiana State University and Agricultural and Mechanical College does hereby approve the request from LSUA to enter into a lease agreement with The Alexandria Museum of Art by which a small plot of land will be leased to the Alexandria Museum of Art, with the lease to contain such terms and conditions as the President, in consultation with the General Counsel, deems to be in the best interests of LSU.

BE FURTHER RESOLVED, that the Board finds an acceptable university purpose for the Alexandria Museum of Art, a subsidiary of the LSU foundation, to enter into such a lease.

GROUND LEASE AGREEMENT

BY AND BETWEEN

LOUISIANA STATE UNIVERSITY at ALEXANDRIA

AND

THE ALEXANDRIA MUSEUM of ART

THIS GROUND LEASE AGREEMENT is made and entered into this 1st day of November 2023 (“Effective Date”), by and between The Board of Supervisors of Louisiana State University and Agricultural and Mechanical College, through Louisiana State University at Alexandria, hereinafter referred to as “LSUA or LESSOR,” and the Alexandria Museum of Art, an affiliate of LSUA and owned by the LSUA Foundation, officially domiciled at Alexandria, Louisiana, hereinafter referred to as “MUSEUM or LESSEE.”

WITNESSETH:

WHEREAS, Article VII, Section 14(C) of the Constitution of the State of Louisiana provides that “For a public purpose, the state and its political subdivisions...may engage in cooperative endeavors with each other, with the United States or its agencies, or with any public or private association, corporation, or individual,” and

WHEREAS, LSUA has the authority to enter into this Agreement, as evidenced by its government-designated role as an institution of higher learning within Louisiana State University, a public university of the State of Louisiana, and

WHEREAS, LSUA wishes to acquire a decommissioned military tracked vehicle for the purpose of display at the LSUA Athletic Facility on the LSUA Campus, located in Alexandria, Louisiana, and

WHEREAS, Title 10 USC § 2572 (a) (4) authorizes the Secretary of the Army to provide certain combat materiel to incorporated museums that are operated and maintained for educational purposes only, and the charters of which deny them the right to operate for profit, and

WHEREAS, LSUA’s affiliate, the Alexandria Museum of Art, AMoA, through the LSUA Foundation meets all requirements for the United States Army Donation Program, and

WHEREAS, LSUA wishes to enter into a 99-year ground lease agreement with the MUSEUM for which the sole purpose is to lease a plot of land to the LESSEE for the display of decommissioned, tracked, military vehicle.

NOW, THEREFORE, in consideration of the premises and the mutual covenants herein contained, the parties hereto agree as follows:

**ARTICLE I
LEASE OF THE PROPERTY**

In consideration of the covenants, agreements, and conditions herein set forth, which the Lessee hereby agrees shall be kept and performed, the Board does hereby lease unto the Lessee, and the Lessee does hereby lease from the Board, certain property with dimensions of 25' x 35', and a total area of 875 sq. ft., located on the LSUA campus as depicted and described in more detail in Exhibit "A" (the "Property").

**ARTICLE II
TERM**

Unless sooner terminated as herein provided, this AGREEMENT shall be and continue in full force and effect for an initial term of ninety-nine (99) years (the "Term"), such term commencing on the Effective Date.

**ARTICLE III
CONSIDERATION**

In consideration of the Board leasing the Property, the Lessee agrees to pay an annual rent the sum of one dollar (\$1.00). The entirety of rent, ninety-nine dollars and zero cents (\$99.00) shall be due on the Effective Date of this Agreement. Should either party terminate this Agreement, with or without cause, the remaining years' rent shall be refunded to Lessee. Remaining years shall be calculated starting with the first full year subsequent to the then current year.

**ARTICLE IV
AGREEMENT TO CONSTRUCT**

LSUA agrees to construct a reinforced, concrete foundational pad, sized to support the tracked military vehicle and constructed to meet the United States Army specifications. Concrete pad will be constructed at no cost to the LESSEE. Concrete foundation will be constructed prior to the delivery of the U.S. Army tracked military vehicle.

**ARTICLE V
LANDSCAPING, MAINTENANCE, REPAIRS**

LSUA shall maintain the Property and associated landscaping thereon in good condition and make all necessary repairs to maintain the Property. LSUA agrees to pay for all costs

associated with such maintenance and repairs. Landscaping and associated upkeep remains the responsibility of the LESSOR.

**ARTICLE VI
TERMINATION FOR CONVENIENCE**

Should LSUA remove itself from the United States Army Donation program, and subsequently return the tracked military vehicle to the U.S. Army, this Agreement may be terminated by LESSOR without consequence hereto.

**ARTICLE VII
ASSIGNMENT**

MUSEUM shall not assign any interest in this Agreement and shall not transfer any interest in same (whether by assignment or novation), without prior written consent of LSUA.

**ARTICLE XIII
DISCRIMINATION CLAUSE**

MUSEUM agrees to abide by the requirements of the following as applicable: Title VI and VII of the Civil Rights Act of 1964, as amended by the Equal Opportunity Act of 1972, Federal Executive Order 11246, the Federal Rehabilitation Act of 1973, as amended, the Vietnam Era Veteran's Readjustment Assistance Act of 1974, Title IX of the Education Amendments of 1972, as amended, the Age Act of 1975, as amended, and MUSEUM agrees to abide by the requirements of the Americans with Disabilities Act of 1990, as amended. MUSEUM agrees not to discriminate in its employment practices and will render services under this contract without regard to race, color, religion, sex, sexual orientation, national origin, veteran status, political affiliation, or disabilities. MUSEUM acknowledges and agrees that any act of unlawful discrimination committed by MUSEUM, or any other failure to comply with these statutory obligations when applicable shall be grounds for termination of this Agreement.

**ARTICLE XIV
INDEMNIFICATION**

MUSEUM shall indemnify and save harmless LSUA against any and all claims, losses, liabilities, demands, suits, causes of action, damages, and judgments of sums of money to any party accruing against LSUA growing out of, resulting from, or by reason of any act or omission of MUSEUM, its agents, servants, independent contractors, or employees while engaged in, about, or in connection with the discharge or performance of the terms of this Agreement. Such indemnification shall include LSUA's fees and costs of litigation, including, but not limited to, reasonable attorneys' fees. MUSEUM shall provide and bear the expense of all personal and professional insurance related to its duties arising under this Agreement.

**ARTICLE XV
INSURANCE**

MUSEUM agrees to purchase and maintain professional liability and commercial general liability insurance of a minimum of \$2,000,000 each combined single limits coverage per occurrence for Personal Injury, Property Damage or other damage, injuries or claims for those incidents in which the occurrence is the result of the negligence of MUSEUM, its officers, directors, agents, or employees in the performance of this Agreement or MUSEUM's use of the Property under this Agreement. MUSEUM agrees to make LSUA an additional insured on its general liability insurance and to provide LSUA with proof of coverage which includes the requirement of notice by MUSEUM's insurer of any discontinuation of coverage of LSUA. This insurance requirement in no way limits the indemnity obligation provided herein.

**ARTICLE XVI
PARTIAL INVALIDITY; SEVERABILITY**

If any term, covenant, condition, or provision of this Agreement or the application thereof to any person or circumstances shall, at any time or to any extent, be invalid or unenforceable, the remainder of this Agreement, or the application of such term, covenant, condition or provision to persons or circumstances other than those as to which it is held invalid or unenforceable, shall not be affected thereby, and each term, covenant, condition, and provision of this Agreement shall be valid and be enforced to the fullest extent permitted by law.

**ARTICLE XVII
ENTIRE AGREEMENT; MODIFICATION**

This Agreement, including any attachments that are expressly referred to in this Agreement, contains the entire agreement between the parties and supersedes any and all agreements or contracts previously entered into between the parties. No representations were made or relied upon by either party, other than those that are expressly set forth. This Agreement may be modified or amended at any time by mutual consent of the parties, provided that, before any modification or amendment shall be operative and valid, it shall be reduced to writing and signed by both parties.

**ARTICLE XVIII
GOVERNING LAW**

The validity, interpretation, and performance of this Agreement shall be controlled by and construed in accordance with the laws of the State of Louisiana.

**ARTICLE XIV
LEGAL COMPLIANCE**

LSUA shall comply with all federal, state, and local laws and regulations, including, specifically, the Louisiana Code of Governmental Ethics (La. R.S. 42:1101, *et seq.*) in carrying out the provisions of this Agreement.

**ARTICLE XV
FORCE MAJEURE**

Neither party to this Agreement shall be responsible to the other party hereto for any failure or delay in performing any obligation under this Agreement that is due to any of the following causes, to the extent beyond the reasonable control of the party: acts of God, riots, war, terrorist act, epidemic, pandemic, quarantine, civil unrest, breakdown of internet or communication facilities, natural catastrophes such as hurricanes or tornadoes, fire or explosion.

THUS, DONE AND SIGNED this ____ day of October, 2023.

**LOUISIANA STATE UNIVERSITY AT
ALEXANDRIA**

By: _____
Deron Thaxton, Executive Vice Chancellor

ALEXANDRIA MUSEUM of ART

By: _____
Claire Ratcliff, Chair



Board of Supervisors

Request from LSU A&M to Consent to Assignment of Lease of Delta Zeta Sorority House to the National Housing Corporation

Date: October 20, 2023

1. Bylaw Citation

Pursuant to Agreement and Act of Lease between LSU and Delta Zeta, Section:

2.h. No assignment without consent of LSU

2. Summary of Matter

Delta Zeta operates a chapter of its sorority on LSU's campus. It owns a house, located on land owned by LSU and leased to the Sigma Chapter of Delta Zeta House Corporation beginning in 1965.

Most Greek organizations place the ground lease and the ownership of the house in a separate housing corporation which exists solely for that purpose. In some cases, the housing corporation is specific to the local chapter, holding that one piece of property. In other cases, the organization has a national housing corporation which holds some or all houses located on campuses across the country.

Currently, the lease with LSU is with a local housing corporation, the Sigma Chapter of Delta Zeta House Corporation. Delta Zeta seeks to transfer the lease and ownership of the house to its national housing corporation, the Delta Zeta National Housing Corporation. This is a routine transaction for Greek organizations on campus.

The transaction will have no impact on LSU or Delta Zeta's activities on campus.

3. Review of Business Plan

No business plan is necessary, as this is a technical change in ownership structure of the property that will not otherwise impact Delta Zeta's legal relationship with LSU.

4. Fiscal Impact

There is no fiscal impact for this transaction.

5. Description of Competitive Process

Not applicable.

6. Review of Legal Documents

LSU will grant its consent to the private parties entering into the Assignment and Assumption of Lease, a draft of which is attached. LSU is not otherwise a party to the agreement. The agreement

recognizes that it does not otherwise change any terms of the lease. It will be reviewed by Office of General Counsel prior to execution by the President.

7. Parties of Interest

Sigma Chapter of Delta Zeta House Corporation
Delta Zeta National Housing Corporation
Delta Zeta Sorority

8. Related Transactions

None.

9. Conflicts of Interest

None.

10. Attachments

1. Assignment and Assumption of Lease (draft)

RESOLUTION

NOW, THEREFORE, BE IT RESOLVED that the Board of Supervisors of Louisiana State University and Agricultural and Mechanical College (the "Board"), does hereby authorize the President of LSU, or designee, acting on behalf and in the name of the Board, and in consultation with general counsel, to execute and deliver a Consent to Assignment and Assumption of Lease from Sigma Chapter of Delta Zeta House Corporation to Delta Zeta National Housing Corporation required by the terms of its Agreement and Act of Lease with LSU dated January 3, 1965 and to provide any other approvals or authorizations necessary for this transaction.

**ASSIGNMENT AND
ASSUMPTION OF LEASE**

**STATE OF LOUISIANA
PARISH OF EAST BATON ROUGE**

This **ASSIGNMENT AND ASSUMPTION OF LEASE** (this “Assignment”) is made and entered into effective as of this ____ day of September, 2023 (the “Effective Date”), by and between **SIGMA CHAPTER OF DELTA ZETA HOUSE CORPORATION**, a Louisiana nonprofit corporation (“Assignor”), and **DELTA ZETA NATIONAL HOUSING CORPORATION**, an Ohio nonprofit corporation (“Assignee”).

Recitals:

A. The Board of Supervisors of Louisiana State University and Agricultural and Mechanical College, a public constitutional corporation organized and existing under the constitution and laws of the State of Louisiana (“Landlord”), and Assignor, as tenant, entered into that certain Agreement and Act of Lease dated January 30, 1965 (as amended from time to time, the “Lease”), with respect to the chapter house and additions thereto located on the Louisiana State University Campus, Parish of East Baton Rouge, Louisiana, as more particularly described in the Lease (the “Premises”).

B. Assignor desires to assign to Assignee, and Assignee desires to assume from Assignor, all rights and obligations under the Lease.

Agreement

NOW, THEREFORE, in consideration of the foregoing, the covenants and agreements contained herein and for other valuable consideration, the receipt and sufficiency of which are hereby acknowledged, the parties hereto, intending to be legally bound, mutually agree as follows:

1. As of the Effective Date, Assignor does hereby assign, transfer, convey and set over unto Assignee all of its rights, interests and obligations as tenant under the Lease. Assignee hereby accepts the transfer and assignment of Assignor’s interests in and to the Lease, and Assignee agrees to assume the rights, interests and obligations of Assignor as tenant under the Lease.

2. Assignor shall indemnify, defend and hold Assignee harmless from and against any and all claims, demands, losses, damages, expenses and costs (including reasonable attorney’s fees) arising, occurring or accruing on or before the Effective Date in connection with the Lease or the Premises. Assignee shall indemnify, defend and hold Assignor harmless from and against any and all claims, demands, losses, damages, expenses and costs (including reasonable attorney’s fees) arising, occurring or accruing after the Effective Date in connection with the Lease or the Premises.

3. Assignee’s address for purpose of notices to be sent to the tenant under the Lease is 202 East Church Street, Oxford, Ohio 45056, Attention: Chief Financial Officer.

4. This Assignment shall be binding upon, and shall inure to the benefit of, Assignor and Assignee and their respective successors and assigns.

5. This Assignment may be executed on any number of separate counterparts, each of which when executed shall be an original and all of which when taken together shall constitute one and the same agreement.

6. This Assignment shall be governed by, and construed in accordance with, the laws of the State of Louisiana.

IN WITNESS WHEREOF, the parties hereto have caused this Assignment and Assumption of Lease as of the date first above written.

ASSIGNOR:

**SIGMA CHAPTER OF DELTA
ZETA HOUSE CORPORATION**, a Louisiana non-profit corporation

Witness: _____

By: _____

Witness: _____

Name: _____

Title: _____

ASSIGNEE:

DELTA ZETA NATIONAL HOUSING CORPORATION, an Ohio non-profit corporation

Witness: _____

By: _____

Witness: _____

Michelle Smith, President

The undersigned landlord hereby consents to the foregoing Assignment and Assumption of Lease

**BOARD OF SUPERVISORS OF
LOUISIANA STATE UNIVERSITY AND
AGRICULTURAL AND MECHANICAL
COLLEGE**, a public constitutional corporation organized and existing under the constitution and laws of the State of Louisiana

By: _____

Witness: _____

Name: _____

Title: _____

Witness: _____



Board of Supervisors

Request from LSU Health Care Services Division-Lallie Kemp Medical Center to Approve an Act 959 Project to Construct a New Clinic Building and An Act 959 Project to Construct Medical Center Entrance and Canopy Remodel

Date: October 20, 2023

1. Bylaw Citation

Pursuant to Article VII, Section 1

G. Capital Improvements

2. Summary of Matter

This request is from LSU Health Care Services Division Lallie Kemp Medical Center for Board for Supervisors approval to submit two projects for Act 959 Approval:

New Clinic Building: This building located at 52579 Hwy 51 South, Independence, will be designed to provide approximately 14,000 square feet centrally located on the campus of LSU HCSD Lallie Kemp Medical Center. The new clinic space with 42 exam rooms, Laboratory drawing stations, registration areas and nursing workstations will replace two aging clinic areas used to provide care to the medical center's patient population of over 30,000. This clinic space will provide functionally designed work areas that will allow for more efficient and productive staff utilization. Estimated project cost will be \$4,350,000.

Medical Center Entrance and Canopy Remodel: This project will provide canopies that protect patients as they enter the hospital from the main hospital entrance and emergency entrance. The emergency entrance canopy will replace an older lower canopy that does not accommodate modern ambulances. The new higher approximately 3,800 square foot canopy will allow patients traveling by ambulance to exit the ambulance and enter the hospital under the protective cover of the canopy. The main entrance canopy will be approximately 2,200 square feet and approximately 400 square feet of the hospital lobby will be remodeled to include two ADA compliant bathrooms. This canopy will provide protection to patients entering the hospital for inpatient admissions, surgery cases and ancillary services. These canopies will provide protection to the medical center's over 30,000 patient population with 100,000 outpatient encounters each year. Estimated project cost will be \$1,980,000.

3. Review of Business Plan

A review of the Business Plan supports a recommendation for approval by the Board of Supervisors.

4. Fiscal Impact

The information provided is sufficient to evaluate the need for the proposed project and will not

have any direct fiscal impact on the University. Funding will be paid for by self-generated funds that were provided by the Louisiana Department of Health.

5. Description of Competitive Process

Design of the project will be undertaken by private Contract upon receipt of all necessary administrative approvals and all construction work will be publicly and competitively bid.

6. Review of Legal Documents

Act 959 of the 2003 Regular Legislative Session establishes the requirements for exemptions from inclusion in the state capitol construction budget. "A university or higher education facility shall be allowed to undertake any new construction, maintenance, or repair project not exceeding five million dollars solely funded from self-generated revenues, grants, donation, or local or federal funds without being included in the capital outlay bill provided the project is approved by the appropriate management board, Board of Regents, the Division of the Administration, Office of Facility Planning and Control, and the Joint Legislative Committee on the Budget.

7. Parties of Interest

All of the parties relevant to the approval and construction of this project do not have any related interest in this project, nor will they receive any financial gain from its approval or construction.

8. Related Transactions

Approval by the Board of Regents, Office of Facility Planning and Control in the Division of Administration, and the Joint Legislative Committee on the Budget.

9. Conflicts of Interest

None.

10. Attachments

1. Wayne A. Wilbright, MD, HCSD Interim Chief Executive Officer
Support Letters
2. Project Scope Descriptions

RESOLUTION

NOW, THEREFORE, BE IT RESOLVED that the Board of Supervisors of Louisiana State University and Agricultural and Mechanical College hereby authorizes the President of LSU or his designee to approve the following project and process the project through the appropriate administrative channels of review and approval, namely, the Board of Regents, the Division of the Administration, Office of Facility Planning and Control, and the Joint Legislative Committee on the Budget, pursuant to Act 959 of the 2003 Regular Legislative Session enacting R.S. 39:128(B)(4) as amended pursuant to Act No. 78 of the 2006 Regular Legislative Session:

LSU HCSD Lallie Kemp New Clinic Building. Estimated total project cost is \$4,350,000.

LSU HCSD Medical Center Entrance and Canopy Remodel. Estimated total project cost is \$1,980,000.

BE IT FURTHER RESOLVED, that the President of LSU, or his designee, is duly authorized by and empowered for and on behalf of and in the name of the Board of Supervisors of Louisiana State University and Agricultural and Mechanical College to approve the plans and specifications for the proposed improvements and to approve cost increases up to 20% of the amount approved to accommodate unforeseen conditions.

BE IT FURTHER RESOLVED, that the LSU President, or his designee, is duly authorized by and empowered for and on behalf of and in the name of the Board of Supervisors of Louisiana State University and Agricultural and Mechanical College to take such action that he may deem in the best interest of the Board of Supervisors to process and obtain administrative approvals for this project.”

LSU HCSD Lallie Kemp Medical Center Entrance and Canopy remodel to Main Hospital Entrance and Emergency Entrance: This project will provide canopies that protect patients as they enter the hospital from the Main hospital entrance and emergency entrance. The emergency entrance canopy will replace an older lower canopy that does not accommodate modern ambulances. The new higher approximately 3,800 square Feet canopy will allow patients travelling by ambulance to exit the ambulance and enter the hospital under the protective cover of the canopy. The entrance change will relocate one exam bed creating improved flow for staff and patients entering the emergency department. The Emergency ambulance and walk-in entrances will be remodeled to give patients protection from inclement weather while entering the facility. The main entrance canopy will be approximately 2,200 square feet and approximately 400 square feet of the hospital lobby will be remodeled to include two ADA compliant bathrooms. This canopy will provide protection to patients entering the hospital for inpatient admissions, surgery cases, and ancillary services. These canopies will provide protection to the medical center's over 30,000 patient population with 100,000 outpatient encounters each year. The estimated project cost is \$1.98M and will be funded through project funds from LSU HCSD Lallie Kemp Medical Center.

Construction Cost	\$ 1,650,000
Design	\$ 165,000
Contingency	<u>\$ 165,000</u>
Project Total	\$ 1,980,000

LSU HCSD Lallie Kemp Medical Center Outpatient Clinic Building: This building will be designed to provide approximately 14,000 square feet centrally located on the campus of LSU HCSD Lallie Kemp Medical Center. The new clinic space with 42 exam rooms, Laboratory drawing stations, registration areas and nursing work stations will replace two aging clinic areas used to provide care to the medical center's patient population of over 30,000. This clinic space will provide functionally designed work areas that will allow for more efficient and productive staff utilization. The building will provide access to modern waiting rooms and hallways that allow for appropriate social distancing and ADA compliance. The estimated project cost is \$4.35M and will be funded through project funds from LSU HCSD Lallie Kemp Medical Center.

Construction Cost	\$ 3,625,000
Design	\$ 362,500
Contingency	\$ 362,500
Project Total	\$ 4,350,000

September 13, 2023

To: William F. Tate IV
President

Through: Kimberly J. Lewis
Executive Vice President, Chief Administrative Officer

Through: Anzilla R. Gilmore, FAIA, NOMAC
Associate Vice President Facility & Property Oversight

Through: Danny Mahaffey
Assistant Vice President/University Architect Facility & Property Oversight

From: Wayne A. Wilbright, MD
HCSD Interim Chief Executive Officer

Subject: Board of Supervisors Agenda, October 20, 2023 Meeting
LSU HCSD Lallie Kemp Medical Center Entrance and Canopy remodel, Act 959
Construction Project

LSU HCSD Lallie Kemp Medical Center is seeking approval of the LSU HCSD Lallie Kemp Medical Center Entrance and Canopy remodel to Main Hospital Entrance and Emergency Entrance under the provisions of Act 959. It is therefore requested that this project be placed on the agenda for the October 20, 2023, meeting of the Board of Supervisors. The project will be funded through project funds from LSU HCSD Lallie Kemp Medical Center provided by the Louisiana Department of Health.

September 13, 2023

To: William F. Tate IV
President

Through: Kimberly J. Lewis
Executive Vice President, Chief Administrative Officer

Through: Anzilla R. Gilmore, FAIA, NOMAC
Associate Vice President Facility & Property Oversight

Through: Danny Mahaffey
Assistant Vice President/University Architect Facility & Property Oversight

From: Wayne A. Wilbright, MD
HCSD Interim Chief Executive Officer

Subject: Board of Supervisors Agenda, October 20, 2023 Meeting
LSU HCSD Lallie Kemp Medical Center Outpatient Clinic Building, Act 959
Construction Project

LSU HCSD Lallie Kemp Medical Center is seeking approval of the LSU HCSD Lallie Kemp Medical Center Outpatient Clinic Building under the provisions of Act 959. It is therefore requested that this project be placed on the agenda for the October 20, 2023, meeting of the Board of Supervisors. The project will be funded through project funds from LSU HCSD Lallie Kemp Medical Center provided by the Louisiana Department of Health.



Board of Supervisors

Request from LSUHSC-NO to Amend the Prior Approval of a Request to Approve the Purchase of Land in Square 440, First District, New Orleans

Date: October 20, 2023

1. Bylaw Citation

Pursuant to Article VII, Section 1:

D. Transfer of Title to Immovable Property

2. Summary of Matter

At its December 9, 2016 meeting, the Board of Supervisors authorized the acquisition of non-state-owned land located in Square 440 in the First District of New Orleans to increase the property holdings of the Board in the LSUHSC-NO's downtown campus area. Certain parcels were available for immediate purchase at that time, and since then several other properties have been acquired as they came on the market.

The resolution adopted at the time authorized, by name, the individual who was then serving as President of LSU to execute agreements on behalf of the Board. In keeping with current Board practice and guidance from title counsel, the current proposal is to amend the prior resolution to more clearly authorize the position of President of LSU to execute the appropriate documents, without identifying the President by name.

3. Review of Business Plan

This amended resolution does not alter any business terms of the prior resolution.

4. Fiscal Impact

This amended resolution has no fiscal impact. LSUHSC-NO will recommend to the President acquisition of particular parcels within Square 440 as they become available at a reasonable price, negotiated in accordance with Division of Administration regulations.

5. Description of Competitive Process

Not applicable.

6. Review of Legal Documents

Final legal agreements for any purchases will be reviewed by the Office of General Counsel prior to execution by the President.

7. Parties of Interest

Not applicable.

8. Related Transactions

Not applicable.

9. Conflicts of Interest

Not applicable.

10. Attachments

1. Original Resolution

RESOLUTION

NOW, THEREFORE, BE IT RESOLVED that the Board of Supervisors of Louisiana State University and Agricultural and Mechanical College hereby amends and restates in its entirety its resolution adopted December 9, 2016, in connection with the authorization to purchase property located in Square 440, First District, New Orleans (the "*Original Resolution*"), as follows:

"NOW, THEREFORE, BE IT RESOLVED that the Board of Supervisors of Louisiana State University and Agricultural and Mechanical College does hereby the President of Louisiana State University, or designee, on behalf of and in the name of the Board of Supervisors, to purchase the remaining non-State owned lots in Square 440 in the First District of New Orleans, and to execute any acts of sale or any other agreements necessary to effect and record such purchase(s), with such acts or agreements containing such terms and conditions as the President, in consultation with the General Counsel, deems to be in the best interest of the Board. The final price will be negotiated per Division of Administration regulations."



**Request From LSU Health Sciences New Orleans
To Approve the Purchase of Land in
Square 440, First District, New Orleans**

To: Members of the Board of Supervisors

Date: December 9, 2016

Pursuant to Article VII, Section 9.A.2. of the Bylaws of the Louisiana State University Board of Supervisors, this matter is a “significant board matter”.

9.A.2. The transfer of title or ownership to any immovable property to or from the Board, whether by sale, assignment, donation, or other mechanism.....

1. Summary of Matter

The LSU Health Sciences Center – New Orleans (LSUHSC-NO) proposes to purchase the remaining non-State- owned parcels of land adjacent to LSUHSC-NO property, listed below:

Address	Lot	Square Footage	Owner	Appraised Value*, year
1800 Gravier	17	2,815	Tai K Ly	\$287,000 , 2016
1828 Gravier	24	1,991	Marie V Turner	\$42,000 , 2013
1824 Gravier, 512 & 516 S. Roman	22, 23, 24	5,916	May L Bowman	\$115,000 , 2013
531 & 535 S. Derbigny	10, 11	7,186	GLK, LP	NA

*Appraised values must be updated within 6 months of the purchase.

The first of the parcels available currently is that located at 1800 Gravier Street, New Orleans and is depicted on the attached drawing. The proposed purchase price is \$287,000 and is based on an appraisal conducted by Bird & Associates on October 18, 2016. The final price will be negotiated per Division of Administration regulations. This transaction is part of LSUHSC-NO’s effort to improve campus security and to construct future academic buildings, and is consistent with the master plan for the campus.

With this authority, LSUHSC-NO proposes to also purchase the other remaining parcels within Square 440, as they become available, in accordance with the guidelines of the Division of Administration.

2. Review of Business Plan

The funds for the transaction are from LSUHSC-NO’s unrestricted funds

3. Fiscal Impact

The purchase of this tract will increase the property holdings of the Board of Supervisors in the LSUHSC-NO’s downtown campus area.

4. Description of Competitive Process

The purchase price of the land is based on current market value, as determined by a current appraisal.

5. Review of Legal Documents

Not applicable.

6. Parties of Interest

None.

7. Related Transactions

An Act of Sale will be entered into between the current owner and the Board of Supervisors of Louisiana State University and Agricultural College once the recommendation to purchase has been approved by the Board.

8. Conflicts of Interest

None.

ATTACHMENTS:

- I. Letter from Chancellor Hollier
- II. Legend Map of Property
- III. Summary Appraisal Report by Bird & Associates, dated October 18, 2016(Available on Board of Supervisors website)

RECOMMENDATION

“NOW, THEREFORE, BE IT RESOLVED that the Board of Supervisors of Louisiana State University and Agricultural and Mechanical College does hereby authorize F. King Alexander, President of Louisiana State University, or his designee, on behalf of and in the name of the Board of Supervisors, to purchase the remaining non-State owned lots in Square 440 in the First District of New Orleans listed above, the first of which with street address of 1800 Gravier Street New Orleans, LA 70112 is to be purchased immediately, and to execute any acts of sale or any other agreements necessary to effect and record such purchase(s). The final price will be negotiated per Division of Administration regulations.

BE IT FURTHER RESOLVED that F. King Alexander, President of LSU, or his designee, is hereby authorized by and empowered for and on behalf of and in the name of the Board of Supervisors, in consultation with General Counsel, to include in said approval to purchase said property any terms and conditions that he may deem in the best interest of the Board of Supervisors.”



LSU

UTILITIES
MODERNIZATION
IMPROVEMENT

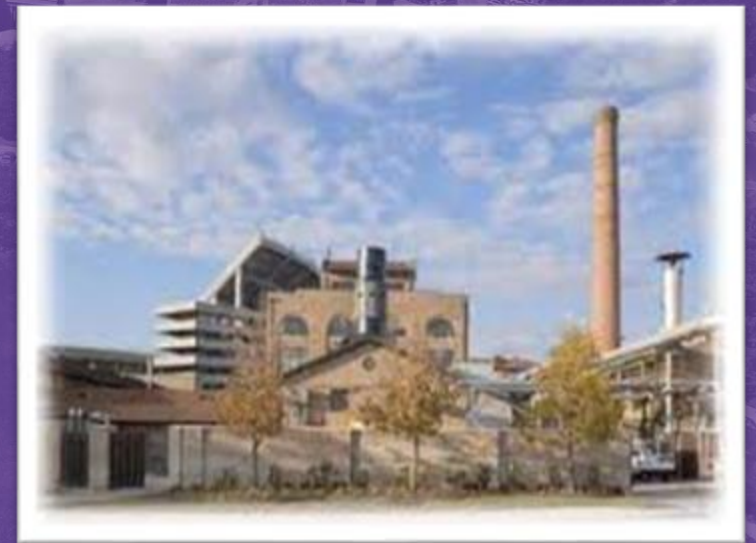


► Project Update | October '23

UMI PROJECT RECAP

Louisiana State University has taken an important step toward building a more reliable, efficient, and sustainable campus infrastructure by partnering with CenTrio to modernize LSU's district energy facilities.

This project will upgrade the existing facilities in order to generate substantial energy and operational savings for LSU while promoting sustainability, reliability and efficiency of utility systems campus-wide.



The Audubon Sugar Factory was originally constructed in 1925

PROVIDING PEACE OF MIND

PROJECT SCOPE OF WORK HIGHLIGHTS

- New Equipment and utility infrastructure at the Powerhouse and Highland Plants.
- Expansion of Highland plant for new chilled water capacity.
- Chilled Water distribution piping routed through campus connecting the two plants.

SCHEDULE - ALL SCOPES

- **Overall Project** - March 2022 – May 2024
- **Highland Plant** - July 2022 – February 2024
- **Distribution** - November 2023 – April 2024
- **Main Plant** - November 2022 – May 2024



CHILLED WATER DISTRIBUTION PROGRESS



An excavator sits in a trench on Thursday, June 22, 2023, in the Quad on LSU's campus in Baton Rouge, La.
Matthew Perschall



Chilled water piping has been installed in the Quad and the Quad has been restored.

3,600 feet of chilled water piping has been installed on Tower Dr. starting at S Stadium Dr. connecting to the Highland Utility Center

Chilled water piping has been installed in Fieldhouse Dr.



PROGRESS AT THE HIGHLAND UTILITY PLANT



PROGRESSION



Three 600 hp
distribution
pumps



8,400 tons
new chilled
water capacity



PROGRESS AT THE POWERHOUSE



**Cooling Towers
for Demo**



**New Cooling Towers
at the Powerhouse.**

UPCOMING PROGRESS



Remove Chiller #6 and associated boiler.

Commenced 10/2/23



S. Campus Dr. to be closed from Fieldhouse Dr. to Tower Dr.

Expected ~11/01/23



Demo of Chiller 6 cooling tower. Begin construction of new boiler building.

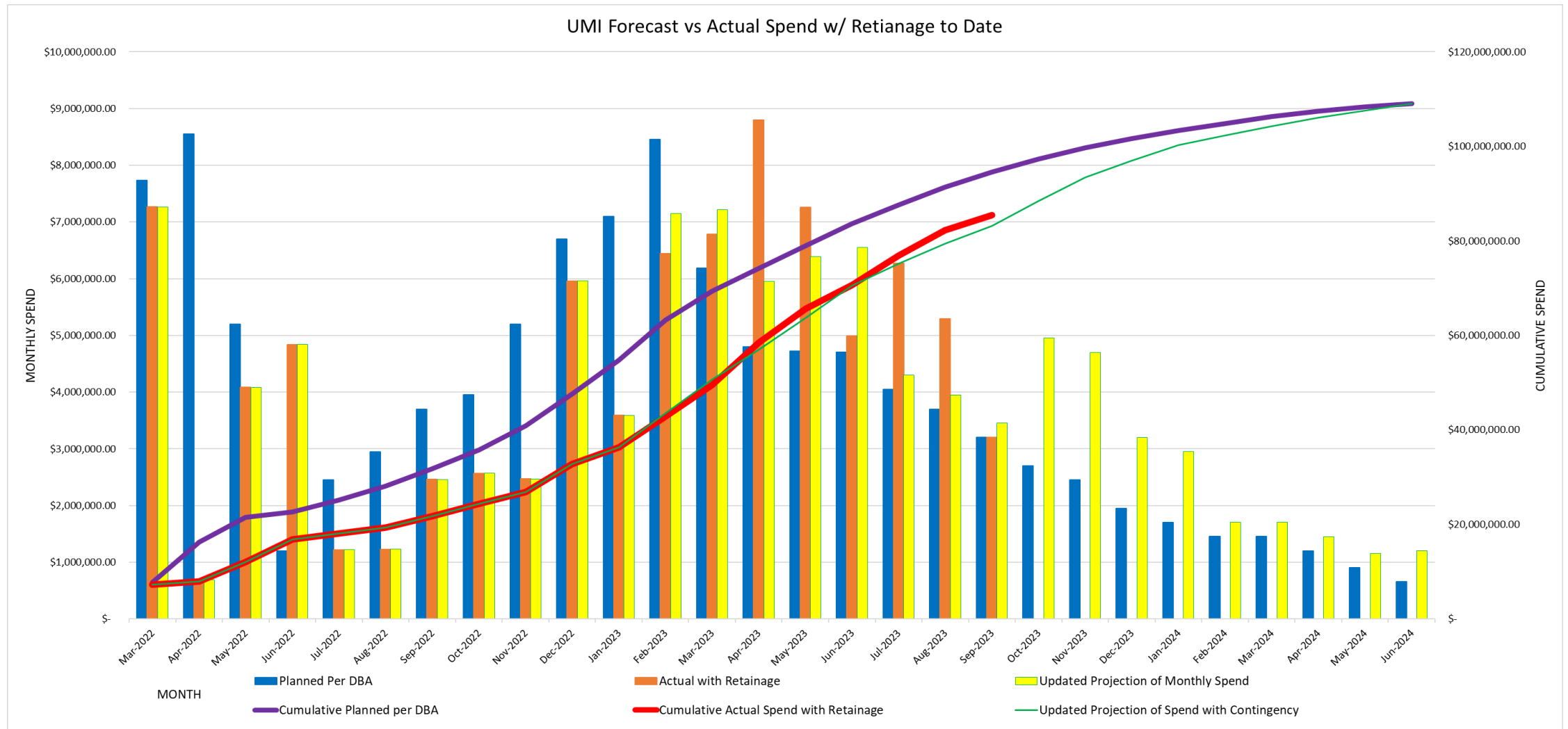
Commenced 10/4/23



Tower Dr. restored for vehicle traffic.

Expected ~11/01/23

Current Financial Spend Curve for the UMI



SUPPLIER DIVERSITY UPDATE

UMI PROJECT AND O&M MBE/WBE/DBE % OF SPEND

UMI PROJECT (Total Project)	O&M (Average YTD)
18.10%	49.93%

UMI PROJECT KEY D&I PARTNERS

Company	Scope Of Work	Contract Value
GoTech	Civil Engineering Consulting	\$ 700,000
Manning Architects	Architect	\$ 66,500
Diverse Building Enterprises, LLC	Mechanical Equipment - Chillers	\$ 8,164,263
Diverse Building Enterprises, LLC	Mechanical Equipment - Cooling Towers	\$ 4,161,383
Mid South Equipment	Mechanical Equipment - Pumps	\$ 1,296,729
Diverse Building Enterprises, LLC	Mechanical Equipment - Boiler	\$ 2,580,650
Diverse Building Enterprises, LLC	Mechanical Equipment - DA	\$ 979,454
Leaaf Environmental, LLC	Environmental Surveying	\$ 42,143
Elite Waste	Waste Removal	\$ 11,081
Terry Honore Construction	General Carpentry	\$ 14,083
American Construction & Demolishing Con	Demo	\$ 253,744
Infinity	Design (Science Loop)	\$ 894,822

O&M KEY D&I PARTNERS

Contractor	Scope of Work	Payment
		YTD
Air-Nu	Air Filters	-\$20,219.93
Austin fire Systems, LLC	Fire Protection	-\$16,200.00
CK3 Logistics LLC	Janitorial & Safety Supplies	-\$26,000.00
CORE Boiler & Mechanical Services, LLC	Boiler Services	-\$3,139,182.00
DMM & Associates, LLC	D&I Consulting	-\$25,500.00
Manning Architect	Architectural Design	-\$32,830.00
Miguez Fuel	Fuel	-\$5,878.12
Moody Price	Valves	-\$1,783.73
Ordes Services, LLC	General Electrical	-\$377,066.86
Vivid Ink	Marketing	-\$2,060.06

CenTrio

UTILITY MODERNIZATION INITIATIVE

	2022					2023												2024						
	Q3		Q4			Q1			Q2			Q3			Q4			Q1			Q3			
	AUG	SEP	OCT	NOV	DEC	JAN	FEB	MAR	APR	MAY	JUN	JUL	AUG	SEP	OCT	NOV	DEC	JAN	FEB	MAR	APR	MAY	JUN	
LSU IMPORTANT DATES								Spring Break 13-17	Recruiting Days 15, 29	Graduation 19-20				Welcome Week 14-18		Fall Break 5 & 6		Grad 15	Classes Begin 16				Grad 17-18	
HIGHLAND UTILITY CENTER (HUC)																								
- Demolition of Existing Chilled Plant																								
- Cooling Towers & Condensing Water System																								
- Phase 1: Chiller & CHW Piping Installation																								
- Phase 2: Chiller Installation																								
- New Building Erection																								
POWERHOUSE UPGRADES																								
- Phase 1: Demolition Chillers & Cooling Towers																								
- Phase 1: Installation Chillers & Cooling Towers																								
- Phase 2: Demolition Chillers & Cooling Towers																								
- Phase 2: Installation Chillers & Cooling Towers																								
- New Boiler Building Erection																								
- New Boiler and Feedwater System																								
- Installation of New Control System																								
NW & QUAD CHILLED WATER (CHW) LOOP CROSS CONNECTS																								
- Installation of the Piping in the Quad								18 - 19																
- Installation in the S. Portion of Fieldhouse Dr.																								
- Installation of N. Portion of Fieldhouse Dr																								
INSTALLATION OF CHILLED WATER (CHW) PIPE FROM HUC TO S. CAMPUS DRIVE																								
- Jack and Bore Across Highland Road																								
- 1650ft Directional Bore & Pipe Installation																								
ELECTRICAL UPGRADES CHAMPIONS SUBSTATION & CONNECTION TO HUC																								
- Installation of Electrical Wire																								
- Upgrades to Champions Substation																								



Centrio

**INNOVATIVE ENERGY.
SUSTAINABLE SOLUTIONS.**

CenTrio | Baton Rouge

303 S. Stadium Drive
Baton Rouge, LA 70802
225.578.3580

CenTrio | Corporate Office

1301 McKinney St, Suite 2060
Houston, TX 77010
713.315.5200

centrioenergy.com



Board of Supervisors

ATHLETICS COMMITTEE

BOARD OF SUPERVISORS MEETING | OCTOBER 20, 2023



Board of Supervisors

Request from LSU Athletics to Approve Amendment to Employment Agreement for Baseball Head Coach

Date: October 20, 2023

1. Bylaw Citation

Pursuant to Article VII, Section 1(L)(3):

The following matters shall require approval by the Board, regardless of any delegations of authority otherwise provided for in these Bylaws or the Regulations of the Board. Except as set forth herein, no such matter shall be undertaken or approved by or for any campus or the University without prior review by the President and appropriate University Officers and express, formal approval by the Board.

* * * *

Appointments and all other personnel actions relating to varsity athletics coaches and Athletic Directors receiving a salary of \$250,000 or above.

2. Summary of Matter

This resolution seeks approval of a new employment agreement Jay Johnson, Head Coach of the LSU Baseball Team. The key terms of the agreement are summarized below:

Name	Title	Proposed Start Date	Proposed End Date	Proposed Total Certain Compensation ^a
Jay Johnson	Head Baseball Coach	9/1/2023	8/31/2030	\$1,650,000

Notes:

- (a) Total Certain Compensation includes all compensation which the coach is contractually guaranteed to receive annually in the first contract year. It does not include the value of any fringe benefits, such as car allowances, nor any one-time amounts, such as buy-outs, post-season incentive compensation or relocation allowances.

3. Review of Business Plan

Not applicable.

4. Fiscal Impact

The Athletics Department currently expects all funds relating to this Employment Agreement will be paid from revenues generated by the Athletics Department.

5. Description of Competitive Process

Not applicable.

6. Review of Legal Documents

The Office of General Counsel has reviewed the First Amendment to Employment Agreement.

7. Parties of Interest

LSU and the above-named personnel.

8. Related Transactions

None.

9. Conflicts of Interest

None known

10. Attachment

First Amendment to Employment Agreement: Jay Johnson

RESOLUTION

NOW, THEREFORE, BE IT RESOLVED the Board of Supervisors of Louisiana State University and Agricultural & Mechanical College approves the First Amendment to Employment Agreement for Jay Johnson as described in this item, and authorizes the President to sign said agreement, in consultation with the Office of General Counsel.

FIRST AMENDMENT TO EMPLOYMENT AGREEMENT

This First Amendment to Employment Agreement (“First Amendment”) is made and entered into as of this 1st day of September, 2023, by and between the Board of Supervisors of Louisiana State University and Agricultural and Mechanical College (“LSU”), a body corporate existing under the Constitution and laws of the State of Louisiana, herein represented by William F. Tate IV, its duly authorized President, and Jay Johnson (“Employee”):

WHEREAS, LSU and Employee are parties to that certain Employment Agreement (“Employment Agreement”) dated July 1, 2021, which is set to expire August 31, 2026;

WHEREAS, LSU and Employee desire to continue the employment relationship with amendment of certain provisions of the Employment Agreement;

NOW, THEREFORE, in consideration of the mutual promises and covenants contained herein, the parties agree as follows, effective September 1, 2023:

1. Modification of End Date. Section 1(F) of the Employment Agreement is deleted and replaced with the following:

“F. “End Date”: August 31, 2030.”

2. Amendment of Termination Provision. Section 11(A)(1)(a) and 11(A)(1)(b) are deleted and replaced with the following:

“a. If, as determined by LSU and without the need for any adjudication by any other entity, Employee commits any material and substantial violation (or repeated lesser violations) of Governing Athletics Regulations, fails promptly to report any such violation by another person to the Director of Compliance, or commits a material and substantial violation of any LSU policies, rules, or procedures;

b. If, as determined by LSU and without the need for any adjudication by any other entity, there is any material and substantial violation of Governing Athletics Regulations involving any aspect of the Program by any other person if either: (i) the violation occurs or continues to occur after Employee knew or had constructive knowledge that it was about to occur or was occurring, or (ii) Employee failed to follow reasonable policies and procedures established in writing by the Athletics Department to prevent violations of Governing Athletics Regulations from occurring and to detect promptly any such violations which may occur;”

3. Amendment of Termination Provision. The following language is added to the end of Section 11(A)(1), after Section 11(A)(1)(s):

“provided, however, that in each case, to the extent curable, Employee has not cured the circumstances constituting “cause” within seven days of written notice thereof from University.”

4. **Modification of Supplemental Compensation.** Section 1 of Schedule A of the Employment Agreement is deleted and replaced with the following:

“1. **License, Royalty and Supplemental Compensation.** Pursuant to Section 7 of the Employment Agreement, Supplemental Compensation is payable as follows:

A. **License.** As owner of the rights to Employee’s name, image and likeness, Employee grants to the University and Athletics Department, during the term of this Agreement, a perpetual, non-exclusive and non-transferrable license of the names, nicknames, initials, autograph, likeness, images, pictures, video, depictions, resemblance, quotes, phrases, interviews, coaching records, philosophies and methods attributable to Employee, and all derivatives thereof, for any current or future uses solely for promoting the University, Athletics Department or the Program. This license shall include the intellectual property rights and services of Employee in connection with promoting, appearing on, or participating in, as requested, and making reasonable efforts to make successful, LSU-sanctioned television, radio, social media and internet programs, including streaming services, concerning LSU and the Team. Subject to Section 10(C) of the Employment Agreement, this license does not limit Employee’s right to use and profit from his name, image and likeness for any purpose not expressly set forth herein, nor does it give the University or any third party any rights to Employee’s name, image, and likeness for any purpose not expressly set forth herein.

B. **Supplemental Compensation/Royalty.** As a royalty for the license granted herein, Employee will earn and receive Supplemental Compensation as follows, which shall be payable in equal monthly installments. Any amounts due to Employee under this Section for a partial Contract Year shall be prorated.

Start Date through August 31, 2022:	\$800,000
September 1, 2022 through August 31, 2023:	\$850,000
September 1, 2023 through August 31, 2024:	\$1,250,000
September 1, 2024 through August 31, 2025:	\$1,275,000
September 1, 2025 through August 31, 2026:	\$1,325,000
September 1, 2026 through August 31, 2027:	\$1,375,000
September 1, 2027 through August 31, 2028:	\$1,425,000
September 1, 2028 through August 31, 2029:	\$1,500,000
September 1, 2029 through August 31, 2030:	\$1,600,000

C. **Ownership of Programming.** LSU shall exclusively own all rights to any television, radio, and internet programs and shall be entitled, at its option,

to produce and market the programs or negotiate with third parties for the production and marketing of the programs; however, Employee shall have a perpetual, non-revocable license to use such television, radio, and internet programs in which Employee appears or otherwise contributes directly or indirectly. LSU shall retain all revenue generated by the programs including but not limited to that received from program sponsors for commercial endorsements used during the programs. "Program sponsors" shall include, but not be limited to, those persons or companies who make financial contributions supporting, or who pay a fee for, commercial announcements and endorsements used on the programs."

5. **Modification of Incentive Compensation Schedule.** Section 2(A) and 2(C) of Schedule A of the Employment Agreement are deleted and replaced with the following:

"A. **Post-Season Incentive Compensation.** Subject to the terms and conditions set forth in the Agreement, EMPLOYEE shall receive Post-Season Incentive Compensation in the amounts, and based on attaining the goals as outlined below:

1. Southeastern Conference (maximum \$40,000 per contract year):
 - SEC Regular Season Champion \$20,000 AND
 - SEC Tournament Champion \$20,000
2. NCAA Tournament Appearance (maximum \$420,000 per contract year):
 - Regional Appearance \$20,000 AND
 - Super Regional Appearance \$50,000 AND
(reduced by \$15,000, if on the road)
 - Appearance in College World Series \$75,000 AND
 - Appearance in College World Series \$75,000 AND
Championship Series
 - National Champion \$200,000

C. **Academic Incentive Compensation.** In the event the multi-year Academic Performance Rate "APR" (as defined by the NCAA) for the Program is at least 940 in any one contract year, LSU agrees to pay EMPLOYEE Academic Incentive Compensation in the amount of \$15,000 for that contract year. The Academic Incentive Compensation, if payable, shall be considered earned on the date on which the APR for LSU is released and shall be paid within 60 days of such date. To be eligible for such compensation, EMPLOYEE must be employed by LSU as of the date on which the incentives are earned."

6. **No Further Amendment.** Except as set forth in the amendments, the Employment Agreement shall remain binding and in full force and effect. From and after the effective date of

this First Amendment, all references to the term "Agreement" shall include the terms contained in this First Amendment.

IN WITNESS WHEREOF, the parties have executed this First Amendment to Employment Agreement on the day and year first set forth above.

BOARD OF SUPERVISORS OF LOUISIANA
STATE UNIVERSITY AND AGRICULTURAL
AND MECHANICAL COLLEGE

By: _____
William F. Tate IV, President Date

 _____ 9-10-2023
Jay Johnson Date

RECOMMENDED:

 _____
Scott Woodward, Director of Athletics

Kimberly J. Lewis, Executive Vice President of
Finance and Administration & Chief Administrative Officer



Board of Supervisors

RISK MANAGEMENT COMMITTEE

BOARD OF SUPERVISORS MEETING | OCTOBER 20, 2023

LSU OFFICE OF INTERNAL AUDIT

ACTION PLAN SUMMARY

SEPTEMBER 30, 2023

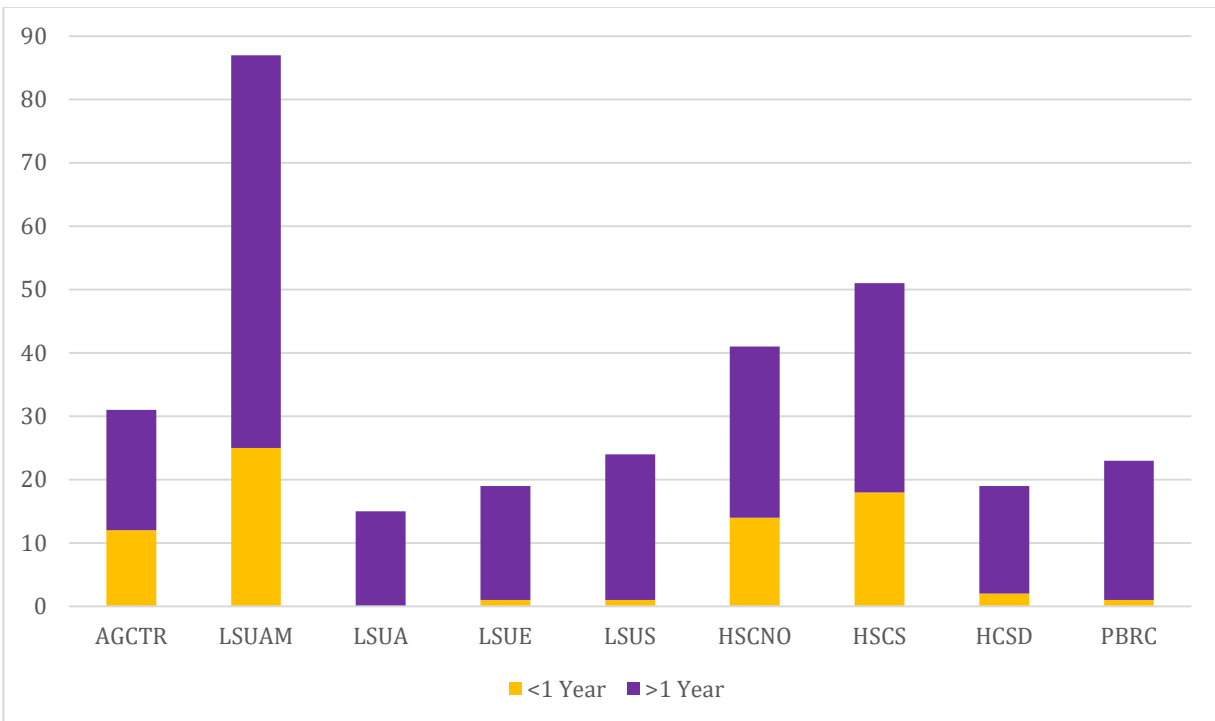
ACTION PLAN SUMMARY

BACKGROUND

Internal Audit provides recommendations at the conclusion of each engagement to mitigate the issues identified during the course of field work. The process owners draft corrective action plans to address the issues, including the anticipated implementation date along with the responsible individual. Internal Audit is in regular communication with the action plan owners regarding the status of implementation. Action plans are considered “pending remediation” when they are not yet due, not complete, or partially complete. Once management indicates corrective action has been fully implemented, the action plans are deemed “under audit review,” and Internal Audit performs limited follow-up testing to confirm the actions adequately address the issue and associated risks.

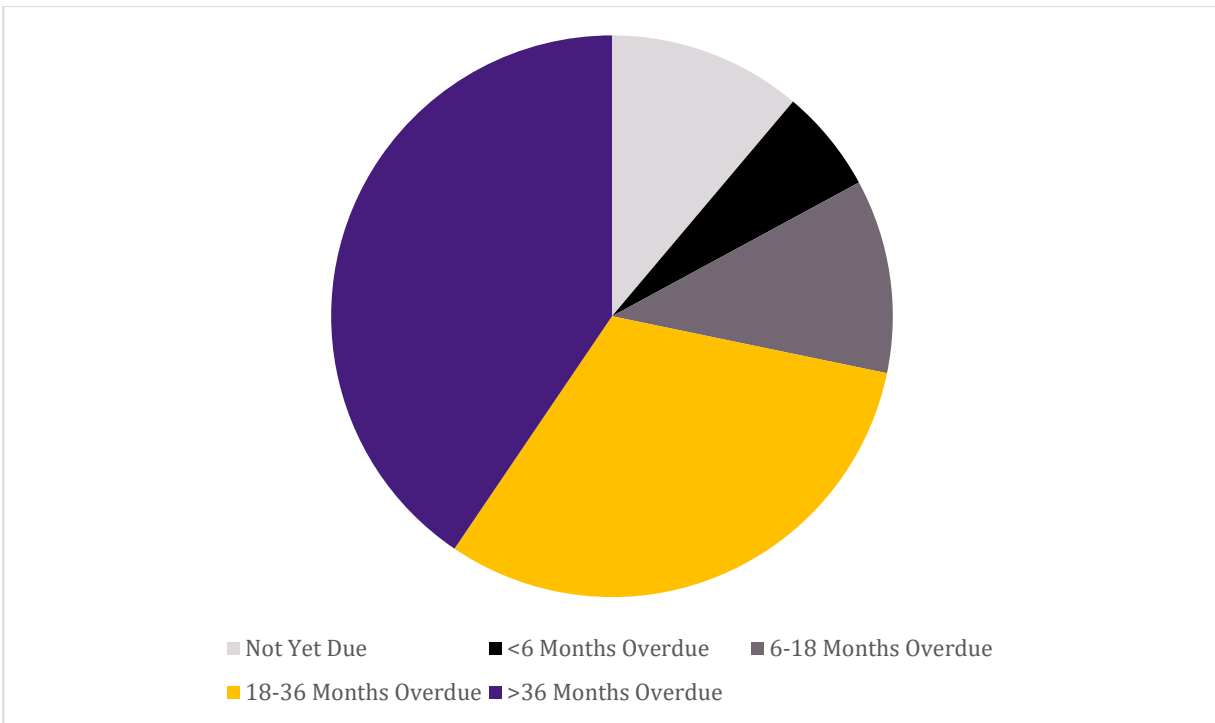
Below are visualizations of open action plans by campus and aging of all open action plans along with charts that include a detailed aging by campus and comparison of IT vs. non-IT given that 71% of open action plans resulted from IT audits.

OPEN ACTION PLANS BY CAMPUS



ACTION PLAN SUMMARY

AGING OF OPEN ACTION PLANS



ALL OPEN ACTION PLANS

Campus	Under Review	Not Yet Due	<6 Months Overdue	6-18 Months Overdue	18-36 Months Overdue	>36 Months Overdue	Open Action Plans
AGCTR	0	10	2	0	19	0	31
LSUAM	26	5	7	14	11	24	87
LSUA	1	0	0	0	8	6	15
LSUE	0	0	0	3	6	10	19
LSUS	0	0	0	2	18	4	24
HSCNO	1	8	2	6	12	12	41
HSCS	13	6	5	1	2	24	51
HCSD	0	1	0	1	3	14	19
PBRC	0	0	0	3	5	15	23
Total	41 <i>13%</i>	30 <i>10%</i>	16 <i>5%</i>	30 <i>10%</i>	84 <i>27%</i>	109 <i>35%</i>	310 <i>100%</i>

ACTION PLAN SUMMARY

NON-IT OPEN ACTION PLANS

Campus	Under Review	Not Yet Due	<6 Months Overdue	6-18 Months Overdue	18-36 Months Overdue	>36 Months Overdue	Open Action Plans
AGCTR	0	0	0	0	0	0	0
LSUAM	21	5	6	5	6	11	54
LSUA	0	0	0	0	2	0	2
LSUE	0	0	0	0	0	0	0
LSUS	0	0	0	0	1	1	2
HSCNO	0	2	0	1	6	0	9
HSCS	13	0	0	0	2	5	20
HCSD	0	1	0	0	0	0	1
PBRC	0	0	0	1	0	0	1
Total	34 <i>38%</i>	8 <i>9%</i>	6 <i>7%</i>	7 <i>8%</i>	17 <i>19%</i>	17 <i>19%</i>	89 <i>100%</i>

IT OPEN ACTION PLANS

Campus	Under Review	Not Yet Due	<6 Months Overdue	6-18 Months Overdue	18-36 Months Overdue	>36 Months Overdue	Open Action Plans
AGCTR	0	10	2	0	19	0	31
LSUAM	5	0	1	9	5	13	33
LSUA	1	0	0	0	6	6	13
LSUE	0	0	0	3	6	10	19
LSUS	0	0	0	2	17	3	22
HSCNO	1	6	2	5	6	12	32
HSCS	0	6	5	1	0	19	31
HCSD	0	0	0	1	3	14	18
PBRC	0	0	0	2	5	15	22
Total	7 <i>3%</i>	22 <i>10%</i>	10 <i>5%</i>	23 <i>10%</i>	67 <i>30%</i>	92 <i>42%</i>	221 <i>100%</i>

LSU OFFICE OF INTERNAL AUDIT

ANNUAL REPORT

SEPTEMBER 30, 2023

TABLE OF CONTENTS

Contents

OVERVIEW	1
RISKS	2
REPORTING	3
AUDIT PROCESS	5
STAFF	6

APPENDIX A - FY 2023 AUDIT ACTIVITY BY FUNCTIONAL RISK CATEGORY

APPENDIX B - FY 2023 AUDITS BY CAMPUS

OVERVIEW

VISION

To be viewed as a valued business partner and a trusted advisor and recognized as a driving force behind a culture of governance, accountability, compliance, and execution that helps in the achievement of the University's objectives.

MISSION

Internal Audit is committed to providing independent, objective, and timely service as well as responding to requests for consulting and other services, and to adding value to and improving the University's operations. Internal Audit helps the University accomplish its objectives by bringing a systematic, disciplined approach to evaluate and improve the effectiveness of risk management, control, and governance processes.

STRATEGIC GOALS

- Focus on the University's highest risks
- Provide impactful reporting to stakeholders
- Maintain efficient and effective audit processes
- Maintain an adequately skilled and knowledgeable staff

INDEPENDENCE STATEMENT

In accordance with Louisiana Revised Statute 17:3351.I, the Office of Internal Audit is maintained as an independent function that conforms to the Institute of Internal Auditors' *International Standards for the Professional Practice of Internal Auditing (Standards)*.

The *Standards* include certain elements to demonstrate that the internal audit activity is independent and internal auditors are objective in performing their work. Our Internal Audit Charter, which was adopted in June 2014 and revised in September 2019, establishes the organization and responsibilities of our office, and includes provisions to ensure independence and objectivity.

RISKS

The scope of internal audit activities is primarily defined through an annual risk assessment process, the results of which are used to establish the audit plan.

INTERNAL AUDIT'S RESPONSIBILITY REGARDING RISK

Internal Audit has responsibility for evaluating the effectiveness and efficiency of controls established by management for the purpose of managing risk. A risk is anything that could occur that would impact the achievement of an objective and is generally measured in terms of impact and likelihood.

RISK ASSESSMENT PROCESS

The purpose of our annual risk assessment is to aid the development of a risk-based plan of activities for the upcoming fiscal year. In this process, Internal Audit evaluates risk exposures relating to the University's governance, operations, and information systems regarding the following:

- Reliability and integrity of financial and operational information
- Effectiveness and efficiency of operations and programs
- Safeguarding of assets from unauthorized acquisition, use, or destruction
- Compliance with laws, regulations, policies, procedures, and contracts

Risks are identified, in part, by seeking input from executive management, operating management, and other sources including external audits, regulatory information, and industry trends.

In determining the level of risk, the following factors may be considered: inherent risk, existing internal controls, results of analytics, outcomes of previous audits, transaction volume (e.g., number or dollar amount), value-added potential, management interest, current events, emerging risks, and auditor discretion. We also rely on risks identified by management during the Enterprise Risk Management process.

To address the risk of fraud, on August 1, 2014, the University issued Permanent Memorandum (PM) 76 - Detection, Reporting, and Investigation of Incidents of Financial Irregularity. In addition, the LSU Ethics and Integrity Hotline, which is hosted by EthicsPoint, provides a secure and confidential means to report suspected fraudulent or unethical behavior.

ANNUAL AUDIT PLAN

Based on our risk assessment, an annual audit plan is developed and presented to the Board of Supervisors' Risk Management Committee for approval. Risks are classified on the audit plan by major functional category with effort budgeted in each area. A detailed list of all audit activities by functional risk category is included as *Appendix A* to this report.

REPORTING

AUDIT REPORTS

Reports are issued at the end of each engagement to the President, Chancellors, and other responsible parties at each institution. Each report includes a response from management that indicates whether they concur with the findings and the corrective actions that they plan to implement to address the recommendations. The list of reports issued by campus for FY 2023 is included as *Appendix B*.

OUTSTANDING ACTION PLANS

At the conclusion of each project, responsible management responds to each finding and recommendation with an action plan that they will implement to address the issue. Internal Audit follows-up with them at the appropriate time to determine if the corrective action was taken and if those actions adequately resolved the issue. A report on outstanding action plans is provided periodically to campus management and to the Risk Management Committee.

The following chart shows the FY 2023 action plan activity for each campus:

Campus	Open as of July 1, 2022	Added During FY 2023	Cleared During FY 2023	Pending Remediation	Under Audit Review	Open Action Plans
LSU Ag Center	22	11	2	31	0	31
LSU A&M	88	15	16	61	26	87
LSU-Alexandria	24	0	9	14	1	15
LSU-Eunice	30	0	11	19	0	19
LSU-Shreveport	26	0	2	24	0	24
LSUHSC-New Orleans	32	13	4	40	1	41
LSUHSC-Shreveport	38	16	3	38	13	51
LSU HCSD	19	3	3	19	0	19
PBRC	23	0	0	23	0	23
	302	58	50	269	41	310

Action plans considered “pending remediation” are those that are not yet due or that are between 0-99% complete. Action plans “under audit review” are those that management has indicated are 100% implemented, and Internal Audit is in the process of reviewing the provided documentation to confirm the risk is sufficiently mitigated. It should be noted that 71% of the open action plans are IT-related.

REPORTING

INVESTIGATIONS

Internal Audit is responsible for conducting investigations when allegations of fraud, conflicts of interest, or significant non-compliance with regulations or policies are reported. Reports of alleged violations are received through the LSU Ethics, Integrity, and Misconduct Helpline; phone calls or emails; through direct reports made by employees, faculty, contractors, students, vendors; or through information discovered during regularly scheduled audits and engagements requested by management.

During FY 2023, Internal Audit allocated approximately 3000 hours to conducting or overseeing a total of 82 investigations, including 12 that were carried forward from FY 2022. Of the 70 new reports, 58 (82%) were received through the LSU Ethics, Integrity, and Misconduct Helpline. At June 30, 2023, 21 complaints remained open and were carried over into FY 2024 for continued investigation. It should be noted that 12 investigations were conducted directly by OIA with the remainder being assigned to other campuses, offices, or departments.

AUDIT PROCESS

To ensure an effective and efficient audit process, Internal Audit has established a Quality Assurance and Improvement Program (QAIP) designed to provide ongoing measurement and analyses of performance metrics to ensure compliance with the *Standards*.

QUALITY ASSURANCE REVIEWS

Internal Audit is required to have an external quality assurance review at least every five years. This review was completed in FY 2019 with Internal Audit receiving an overall rating of “generally conforms” to the *Standards*. This opinion is the highest possible rating and means that practices are in place to ensure independence, objectivity, and proficiency.

Annual internal quality assessments are performed in the years between external reviews as part of the QAIP. This process includes selecting a sample of audits and reviewing related workpapers, reports, and communications to determine adherence to the *Standards*. Although opportunities were identified to improve efficiency of work paper documentation and review, Internal Audit maintained conformity with the *Standards*.

PRODUCTIVITY PERFORMANCE MEASURES

- *Audit Plan Accomplishment*

Each year, an audit plan is developed based on the results of an annual risk assessment. Risks are continually monitored, and the plan is revised to address significant changes that arise. We established a target of 75% completion of our audit plan which allows flexibility for unplanned audit work; in FY 2023, we achieved 56%. Staffing shortages were the primary contributing factor in the shortfall. The plan was created with the assumption that 12,635 hours would be allocated for audits based on expected staffing levels; however, only 9,350 hours were available with actual resources. Additionally, we purchased new audit software which required a diversion of staff resources for implementation and training. Audits not yet completed will be carried over to FY 2024. The chart below illustrates the status of the 2023 Audit Plan at June 30, 2023:

2023 Audit Plan Status	#	%
Audits on plan (as revised)	16	100%
Audits substantially complete	9	56%
Audits carried forward to FY 2024	7	44%

- *Direct/Indirect Effort*

Audit staff allocate their time between direct and indirect hours. Direct hours include time spent working on audits, consultations, special projects, and investigations. Indirect hours include paid leave, meetings, training, and administrative tasks. The internally established goal for our staff was 75% direct audit hours, and we achieved 68% in FY 2023.

STAFF

INTERNAL AUDIT STAFFING

The following position breakdown has been in place since FY 2015:

- Audit and Enterprise Risk Management 12
- Investigative Services 2
- Information Systems Audit 1
- Administrative Support 1

DEGREES

Percent of audit staff with Bachelor's Degrees	100%
Percent of audit staff with Advanced Degrees	33%
Percent of audit staff with Professional Certifications	67%

CERTIFICATIONS (SOME STAFF HOLD MULTIPLE CERTIFICATIONS)

All staff that are not certified are currently pursuing appropriate certifications.

Certified Public Accountant	3
Certified Internal Auditor	6
Certified Fraud Examiner	3
Certified Information Systems Auditor	1
Certified Government Auditing Professional	1
ITIL® Foundation	1

TRAINING AND PROFESSIONAL DEVELOPMENT

Our professional audit staff completed over 500 hours of continuing professional development in FY 2023. This included training provided by the Association of College and University Auditors (ACUA), the local and national chapters of the Institute of Internal Auditors (IIA), the LSU Department of Accounting, the Health Care Compliance Association (HCCA) and others. Training ensures that staff are current on auditing best practices and helps develop subject matter expertise that is valuable to the organization.

APPENDIX A

FY 2023 Audit Activity by Functional Risk Category

AUXILIARY AND SERVICE DEPARTMENTS

2307 – LSU A&M Athletics Financial Controls

FACILITIES, CONSTRUCTION, MAINTENANCE

2205 – LSU A&M Facility Services Operations

2308 – LSU A&M P3 Project Review (REFF)

2309 – HSCNO P3 Project Review (HSCNOF)

GOVERNANCE AND EXTERNAL RELATIONS

2301 – Multi-Campus Student and Consumer Data Privacy

2303 – Multi-Campus Affiliated Organizations

2304 – Multi-Campus Data Governance

HEALTH OPERATIONS/PATIENT CARE

2302 – Multi-Campus Third-Party Billing and Collections

INFORMATION TECHNOLOGY

2105 – Multi-Campus Patch Management

2204 – Multi-Campus Information Technology

INSTRUCTION AND ACADEMIC SUPPORT

2305 – Multi-Campus LSU Online

2306 – LSU A&M International Services

PURCHASING AND WAREHOUSING

2311 – HSCS Procurement Card Review

RESEARCH AND DEVELOPMENT

2209 – HSCS EVT Lab Operations

2310 – HSCS Research Administration

STUDENT SERVICES

2213 – LSU A&M Residential Life Operations

APPENDIX A

OTHER AUDIT ACTIVITIES

- Information Technology (IT) support
- Follow-up on corrective action plans from prior audits
- Annual risk assessment and planning
- Enterprise risk management (ERM) program
- Quality Assessment and Improvement Program (QAIP)
- Investigations/special projects
- Management of LSU Ethics & Integrity Hotline
- Participation on campus committees
 - IT Governance Council
 - PCI Committee
 - GLBA Committee
 - Student Employment Committee
 - Benefits Oversight Committee

APPENDIX B

FY 2023 Audits by Campus

LSU A&M

- 2205 – Facility Services Operations*
- 2213 – Residential Life Operations
- 2306 – International Services
- 2307 – Athletics Financial Controls*
- 2308 – P3 Project Review (REFF)*

LSU HEALTH SCIENCES CENTER – NEW ORLEANS

- 2309 – P3 Project Review (HSCNOF)*

LSU HEALTH SCIENCES CENTER – SHREVEPORT

- 2209 – EVT Lab Operations

MULTI-CAMPUS

- 2302 – Third-Party Billing and Collections
- 2305 – LSU Online

2023 AUDITS CARRIED FORWARD TO 2024:

- 2105 – Multi-Campus Patch Management
- 2204 – Multi-Campus Information Technology
- 2301 – Multi-Campus Student and Consumer Data Privacy
- 2303 – Multi-Campus Affiliated Organizations
- 2304 – Multi-Campus Data Governance
- 2310 – HSCS Research Administration
- 2311 – HSCS Procurement Card Review

**Audits substantially complete as of report date*

MINUTES
LSU BOARD OF SUPERVISORS MEETING
*Board Room University Administration Building
3810 West Lake Drive, Baton Rouge, LA 70808
Friday, September 8, 2023 | 10:00 a.m. CT*

- I. Board Professional Development
- II. Call to Order and Roll Call

Mrs. Valencia Sarpy Jones, Chair, called to order the Regular Meeting of the Board of Supervisors of Louisiana State University and Agricultural and Mechanical College on September 8, 2023.

Present

Ms. Valencia Sarpy Jones, Chair
Mr. Rémy Voisin Starns, Past Chair
Mr. Jimmie Woods, Chair-elect
Mr. Glenn Armentor
Ms. Laurie Lipsey Aronson
Mr. Jay Blossman
Mr. Wayne Brown
Mr. Robert Dampf
Mr. Thomas Luke
Mr. Randy Morris
Mr. Patrick C. Morrow
Mr. Collis Temple Jr.
Ms. Mary Leach Werner
Mr. James Williams
Mr. Richard Zuschlag

Absent

Mr. Lee Mallett

Also participating in the meeting were the following: Dr. William F. Tate IV, President of LSU; Mr. Winston DeCuir, General Counsel for LSU; University officer and administrators of the campuses; faculty and staff representatives; interested citizens and representatives of the news media.

- III. Invocation and Pledge of Allegiance

The invocation was offered by Mr. Javin Bowman, an MHA Candidate at LSUS and Graduate Assistant for the LSU Board of Supervisors. The Pledge of Allegiance was delivered by Mr. Brandon Lagrone, a senior at LSU A&M majoring in Journalism; Philip O’Neill, J.D., M.B.A. Candidate at LSU A&M and Graduate Assistant for the LSU Board of Supervisors; and Tripp Jones, son of Chairman Valencia Sarpy Jones.

- IV. Public Comment

There were not any individuals registered for public comment.

- V. Committee Meetings

Ms. Jones adjourned the regular meeting to convene the committee meetings.

5.A. Research and Agricultural Extension Committee

Present for the Research and Agricultural Extension Committee were Ms. Werner, Mr. Morrow, Mr. Armentor, Mr. Brown, Mr. Morris, Mr. Starns, and Mr. Temple.

5.A.1 Pennington Biomedical Research Center's Greaux Healthy Program Presentation

Dr. John Kurwin, Executive Director of Pennington Biomedical Research Center, and Melissa Morton, Greaux Healthy Program Director, led the presentation regarding the Greaux Healthy Program.

No action needed on this item.

5.B. Academic Committee

Present for the Academic Committee were Mr. Brown, Mr. Luke, Mr. Armentor, Mr. Morrow, Mr. Starns, Mr. Temple, Ms. Werner, and Mr. Williams.

5.B.1 Request from LSU A&M to Establish a Master of Interior Design

Upon motion by Ms. Werner, seconded by Mr. Armentor, the item was approved unanimously.

NOW, THEREFORE, BE IT RESOLVED that the Board of Supervisors of Louisiana State University and Agricultural & Mechanical College does hereby approve the request from LSU A&M to establish the Master of Interior Design.

5.B.2 Consent Agenda

There were six items on the consent agenda.

Upon motion by Mr. Starns, seconded by Ms. Werner, the following items were approved unanimously.

Request from LSU Health Sciences Center New Orleans for Continued Authorization and Continued Designation as a Center of Research Excellence for the Cardiovascular Center of Excellence

NOW, THEREFORE, BE IT RESOLVED that the Board of Supervisors of Louisiana State University and Agricultural & Mechanical College does hereby approve the request from LSU Health Sciences Center - New Orleans for the continued authorization and continued designation as a Center of Research Excellence for the Cardiovascular Center of Excellence.

Request from LSU Health Sciences Center New Orleans for Continued Authorization of the Center for Evidence-based practice in Behavioral Health

NOW, THEREFORE, BE IT RESOLVED that the Board of Supervisors of Louisiana State University and Agricultural & Mechanical College does hereby approve the request from LSU Health Sciences Center - New Orleans for the continued authorization of the Center for Evidence based Practice in Behavioral Health.

Request from LSU A&M to Name Five Spaces in the Newly Renovated Huey P. Long Fieldhouse Complex

NOW, THEREFORE, BE IT RESOLVED that the Board of Supervisors of Louisiana State University and Agricultural & Mechanical College does hereby approve the request from LSU A&M to Name Five Spaces in the Newly Renovated Huey P. Long Fieldhouse Complex.

Request from LSU A&M to name the John G. Turner and Jerry G. Fischer Center for Opera

NOW, THEREFORE, BE IT RESOLVED that the Board of Supervisors of Louisiana State University and Agricultural & Mechanical College does hereby approve the request from LSU A&M to Name the John G. Turner and Jerry G. Fischer Center for Opera.

Request from LSU A&M to Rename the Georgia Gulf Endowed Professorships #1 and #2

NOW, THEREFORE, BE IT RESOLVED that the Board of Supervisors of Louisiana State University and Agricultural & Mechanical College does hereby approve the request from LSU A&M to rename the Georgia Gulf Endowed Professorships #1 and #2

Request from LSU Health Sciences Center New Orleans to Name the Dora Jean Edwards Emergency Department at Lallie Kemp Regional Medical Center

NOW, THEREFORE, BE IT RESOLVED that the Board of Supervisors of Louisiana State University and Agricultural & Mechanical College does hereby approve the request from LSU Health Sciences Center - New Orleans to Name the Dora Jean Edwards Emergency Department at Lallie Kemp Regional Medical Center.

5.C. Finance Committee

Present for the Finance Committee were Mr. Morrow, Mr. Blossman, Ms. Aronson, Mr. Starns, Mr. Morris, Mr. Williams, and Mr. Zuschlag.

5.C.1 Recommendation to Approve the Fiscal Year 2023-2024 Operating Budget

Upon motion by Mr. Morris, seconded by Mr. Zuschlag, the item was approved unanimously.

NOW, THEREFORE, BE IT RESOLVED that the Board of Supervisors of Louisiana State University and Agricultural & Mechanical College does hereby approve the operating budget for the fiscal year ending June 30, 2024, providing:

- a) Final approval and commitment authorization of funds for unrestricted educational and general, medical, and related expenses in the amount of \$ 1,379,579,177 for the campuses shown below.

- LSU A&M
- LSU Agricultural Center
- LSU Alexandria
- LSU Eunice
- LSU Shreveport
- LSU Health Sciences Center, New Orleans
- LSU Health Sciences Center, Shreveport

LSU Pennington Biomedical Research Center
The Hospital and Central Office of the LSU Health Care Services Division

- b) Commitment authorizations for auxiliary enterprises, grants and contracts, and other restricted funds estimated to be \$ 2,134,818,224.
- c) Transactions included or referred to in the operating budget that otherwise require Board approval are not approved by mere inclusion in the operating budget.

BE IT FURTHER RESOLVED that each campus shall prepare a semi-annual financial report. The format of the report will include the following:

1. Budget and actual for unrestricted revenues by source of funds
2. Actual for unrestricted expenditures by object and by function
3. Beginning account balances and actual revenues and expenditures/transfers for restricted operations
4. Any significant changes in the budget that should be brought to the attention of the President and Board
5. An explanation of any significant reduction in anticipated revenues or significant increase in expenditures.

Any subsequent modification to the reporting format will be approved by the President with notification to the Board.

5.D. Property & Facilities Committee

Present for Property & Facilities Committee were Ms. Aronson, Ms. Werner, Mr. Dampf, Mr. Luke, Mr. Woods, and Mr. Zuschlag

- 5.D.1 Request from LSU Health Sciences Center New Orleans to Authorize the First Amendment to the Lease Agreement with the LSU Health Foundation, New Orleans for Additional Leased Space

Upon motion by Mr. Woods, seconded by Mr. Luke, the item was approved unanimously.

NOW, THEREFORE, BE IT RESOLVED that the Board of Supervisors of Louisiana State University and Agricultural and Mechanical College hereby authorizes the President of LSU or designee to execute the First Amendment to the Cooperative Endeavor and Lease Agreement with the LSU Health Foundation, New Orleans to provide additional leased space, with such lease to contain such terms and conditions as the President, in consultation with the General Counsel, deems to be in the best interests of LSU.

- 5.D.2 Request from LSU Health Sciences Center New Orleans to Authorize a Cooperative Endeavor and Lease Agreement with the LSU Healthcare Network for the Ambulatory Surgery Center

Upon motion by Mr. Woods, seconded by Ms. Werner, the item was approved unanimously.

NOW, THEREFORE, BE IT RESOLVED that the Board of Supervisors of Louisiana State University and Agricultural and Mechanical College hereby authorizes the President of LSU or

designee to execute a lease with the Louisiana State University School of Medicine in New Orleans Faculty Group Practice, a Louisiana non-profit organization, to occupy space in the LSU School of Dentistry with such lease to contain such terms and conditions as the President, in consultation with the General Counsel, deems to be in the best interests of LSU.

- 5.D.3 Request from LSU Health Sciences Center New Orleans to Authorize the First Amendment to the Lease Agreement with the Louisiana Cancer Research Center (LCRC) for Additional Leased Space

Upon motion by Mr. Woods, seconded by Mr. Dampf, the item was approved unanimously.

NOW, THEREFORE, BE IT RESOLVED that the Board of Supervisors of Louisiana State University and Agricultural and Mechanical College hereby authorizes the President of LSU or designee to execute the First Amendment to the Lease Agreement with the Louisiana Cancer Research Center to lease additional space, with such lease to contain such terms and conditions as the President, in consultation with the General Counsel, deems to be in the best interests of LSU.

- 5.D.4 Request for Approval of the FY 2024-2025 Five-Year Capital Outlay Budget Request and First Year Prioritized List for Louisiana State University

Upon motion by Mr. Dampf, seconded by Ms. Werner, the item was approved unanimously.

NOW, THEREFORE, BE IT RESOLVED by the Board of Supervisors of Louisiana State University and Agricultural and Mechanical College that the following list of projects to be submitted to the Division of Administration in accordance with the provisions of La. R.S. 39:101 et seq. and first year prioritized project list is approved and;

BE IT FURTHER RESOLVED, that the President of Louisiana State University, or his or her designee, be and he is hereby authorized to make adjustments as necessary in this request as circumstances dictate, including technical corrections, increasing or decreasing the amount requested for individual projects by not more than twenty percent (20%) of the amount approved in this resolution, combining or renaming projects and/or changing sources of funds and to add self-generated projects with individual project costs of less than \$1 million without further approval by the Board, provided, however, that such project additions be reported to the Board.

BE IT FURTHER RESOLVED that transactions included or referred to in the capital outlay request that otherwise require Board approval are not approved by inclusion in the capital outlay request per Article VII, Section 2, A of the Bylaws.

- 5.D.5 Request to Consent to Temporary Reduction in Lease Payment for Lake Charles Memorial Hospital

Upon motion by Mr. Woods, seconded by Mr. Dampf, the item was approved unanimously.

NOW, THEREFORE, BE IT RESOLVED that the Board of Supervisors of Louisiana State University and Agricultural and Mechanical College hereby consents to a twenty-four month reduction in rent for Lake Charles Memorial Hospital effective July 1, 2023.

- 5.D.6 Request from LSUA for the LSUA Foundation to Accept a Donation of Property at 807 Jackson Street in Alexandria, Rapides Parish, Louisiana

Upon motion by Mr. Zuschlag, seconded by Mr. Dampf, the item was approved unanimously.

NOW, THEREFORE, BE IT RESOLVED that the Board of Supervisors of Louisiana State University and Agricultural and Mechanical College does hereby approve the request from LSUA for the LSUA Foundation to accept the donation of the A.C. Buchanan Building and other immovable property located in Rapides Parish, Louisiana from RRMC and The Rapides Foundation, and to include in the acceptance of that donation such terms and conditions as he deems to be in the best interests of LSU

5.E. Athletics Committee

Present for the Athletics Committee were Mr. Temple, Mr. Zuschlag, Ms. Aronson, Mr. Blossman, Mr. Dampf, Mr. Morrow, Ms. Werner, Mr. Williams, and Mr. Woods

5.E.1 Request from LSU Athletics to Approve New Employment Agreement for Men’s Golf Head Coach and Director of Golf

Upon motion by Mr. Williams, seconded by Mr. Dampf, the item was approved unanimously.

NOW, THEREFORE, BE IT RESOLVED the Board of Supervisors of Louisiana State University and Agricultural & Mechanical College approves the Employment Agreement for Chuck Winstead as described in this item, and authorizes President William F. Tate IV to execute the Employment Agreement in consultation with the Office of General Counsel.

5.E.2 Request from LSU Athletics to Approve New Employment Agreement for Women’s Basketball Head Coach

Upon motion by Mr. Zuschlag, seconded by Mr. Morrow, the item was approved.
(Yeas: Jones, Starns, Woods, Armentor, Aronson, Brown, Dampf, Luke, Morris, Morrow, Temple, Werner, William, Zuschlag)
(Nay: Blossman)

NOW, THEREFORE, BE IT RESOLVED the Board of Supervisors of Louisiana State University and Agricultural & Mechanical College approves the Employment Agreement for Kim Mulkey as described in this item, and authorizes President William F. Tate IV to execute the Employment Agreement in consultation with the Office of General Counsel.

5.E.3 Request from LSU Athletics to Approve Amended Employment Agreements for Two Assistant Women’s Basketball Head Coaches

Upon motion by Mr. Dampf, seconded by Ms. Aronson, the item was approved unanimously.

NOW, THEREFORE, BE IT RESOLVED the Board of Supervisors of Louisiana State University and Agricultural & Mechanical College approves the First Amendment of Employment Agreement for Gary Redus and the First Amendment of Employment Agreement for Bob Starkey as described in this item, and authorizes President William F. Tate IV to execute both agreements in consultation with the Office of General Counsel.

5.E.4 Request from LSU Athletics to Approve Amended Employment Agreement for Gymnastics Head Coach

Upon motion by Ms. Werner, seconded by Ms. Aronson, the item was approved unanimously.

NOW, THEREFORE, BE IT RESOLVED the Board of Supervisors of Louisiana State University and Agricultural & Mechanical College approves the Second Amendment of Employment Agreement for Jay Clark as described in this item, and authorizes President William F. Tate IV to execute the Second Amendment of Employment Agreement in consultation with the Office of General Counsel.

5.E.5 Request from LSU Athletics to Approve New Term Sheet for Assistant Baseball Coach

Upon motion by Mr. Zuschlag, seconded by Mr. Dampf, the item was approved unanimously.

NOW, THEREFORE, BE IT RESOLVED the Board of Supervisors of Louisiana State University and Agricultural & Mechanical College approves the Term Sheet for Nathan Yeskie as described in this item, and authorizes President William F. Tate IV to execute the Term Sheet in consultation with the Office of General Counsel.

5.E.6 Request from LSU Athletics to Amend the Ticket and Parking Distribution Policy

Upon motion by Mr. Zuschlag, seconded by Mr. Morrow, the item was approved unanimously.

NOW, THEREFORE, BE IT RESOLVED the Board of Supervisors of Louisiana State University and Agricultural & Mechanical College does hereby authorize annual amendment to the LSU Athletic Ticket, Parking, and Tradition Fund Policy pertaining to Schedules G and H for the allocation of complimentary tickets and parking passes as presented on September 8, 2023.

5.E.7 Request from LSU Athletics to Increase Football Ticket Prices, Parking and Tradition Fund

Upon motion by Mr. Dampf, seconded by Mr. Williams, the item was approved unanimously.

NOW, THEREFORE, BE IT RESOLVED the Board of Supervisors of Louisiana State University and Agricultural & Mechanical College (the "Board") does hereby approve the amendment to the LSU Athletic Ticket, Parking, and Tradition Fund Policy pertaining to Schedule A for LSU Football season ticket pricing as presented on September 8, 2023;

BE IT FURTHER RESOLVED the Board authorizes the President or designee, in consultation with the Board Chair and Athletics Committee Chair, to approve season ticket price increases in the lower bowl and premium area by \$25 per season ticket should the conference add an additional conference game to the schedule;

BE IT FURTHER RESOLVED the Board does hereby approve the amendment to the LSU Athletic Ticket, Parking, and Tradition Fund Policy pertaining to Schedule A for LSU Football student season ticket pricing as presented on September 8, 2023;

BE IT FURTHER RESOLVED the Board authorizes the President or designee, in consultation with the Board Chair and Athletics Committee Chair, to approve student season ticket price increases up to 15% per season ticket should the conference add an additional home game to the schedule; and

BE IT FURTHER RESOLVED the Board does hereby approve the amendment to the LSU Athletic Ticket, Parking, and Tradition Fund Policy pertaining to Schedule D for LSU Football season parking pricing as presented on September 8, 2023.

5.E.8 Request from LSU Athletics to Increase Women's Basketball Ticket Prices and Tradition Fund

Upon motion by Mr. Dampf, seconded by Ms. Aronson, the item was approved unanimously.

NOW, THEREFORE, BE IT RESOLVED the Board of Supervisors of Louisiana State University and Agricultural & Mechanical College does hereby approve the amendment to the LSU Athletic Ticket, Parking, and Tradition Fund Policy pertaining to Schedule B for LSU Women’s Basketball season ticket pricing as presented on September 8, 2023.

- 5.E.9 Request from LSU Athletics to Approve Amendment to Employment Agreement for Deputy Athletics Director for Leadership and Strategy.

Upon motion by Mr. Williams, seconded by Ms. Werner, the item was approved unanimously.

NOW, THEREFORE, BE IT RESOLVED the Board of Supervisors of Louisiana State University and Agricultural & Mechanical College approves the First Amendment to Employment Agreement for Lori Williams as described in this item, and authorizes President William F. Tate IV to execute the Term Sheet in consultation with the Office of General Counsel

VI. Reconvene Board Meeting

The regular meeting was called back to order and roll call conducted.

Present

Ms. Valencia Sarpy Jones, Chair
Mr. Remy Voisin Starns, Past Chair
Mr. Jimmie Woods, Chair-elect
Mr. Glenn Armentor
Ms. Laurie Lipsey Aronson
Mr. Jay Blossman
Mr. Wayne Brown
Mr. Robert Dampf
Mr. Thomas Luke
Mr. Lee Mallett
Mr. Randy Morris
Mr. Patrick C. Morrow
Mr. Collis Temple Jr.
Ms. Mary Leach Werner
Mr. James Williams
Mr. Richard Zuschlag

Absent

Mr. Lee Mallett

VII. Request to Appoint a Boyd Professor

Provost Haggerty presented Boyd Professor nomination for Dr. Kenneth J. Schafer. Board of Supervisors issued a motion to adopt nomination. Upon motion by Mr. Starns and seconded by Mr. Woods, the motion was approved unanimously.

VIII. Approval of Meeting Minutes from the June 15, 2023 Board Meeting and the July 11, 2023 Nominating Committee

Upon motion by Mr. Morrow, seconded by Mr. Dampf, the minutes were approved unanimously.

IX. Personnel Actions Requiring Board Approval

Upon motion by Mr. Woods, seconded by Mr. Morrow, the personnel actions were approved unanimously.

X. Reports to the Board

Upon motion by Mr. Armentor, seconded by Mr. Temple, the Reports to the Board were approved unanimously.

XI. Reports from Faculty Advisors and Staff Advisors

Dr. Kamboj provided an informative report on behalf of the Faculty Advisors.

There is a written Council of Staff Advisors report that has been provided to the Board in lieu of a verbal report.

XII. President's Report

The president provided an informative report.

XIII. Approval of Committee Recommendations

Upon motion by Mr. Starns, seconded by Mr. Armentor, the recommendations were approved unanimously.

XVI. Chair's Report

Ms. Jones reflected on the past year as chairman.

XV. Oath of Office for Chair

Former Appellate Court Judge Regina Bartholomew-Woods administered the Oath of Office to Mr. Jimmie Woods, Sr.

XVI. Election of Chair-Elect

Mr. Williams reported that the Nominating Committee met on July 11. After due deliberation, the committee voted to nominate Mr. Patrick Morrow as Chair-Elect.

Chairman Woods opened the floor for additional nominations. Motion by Ms. Werner to close nominations. The motion was seconded by Mr. Temple. The motion to close nominations was unanimously approved.

Chairman Woods called for a vote in favor of electing Mr. Patrick Morrow as Chair-Elect. Mr. Morrow was elected as chair-elect unanimously.

XVII. Oath of Office for Chair-Elect

Craig Morrow, attorney and son of Mr. Patrick Morrow, administered the Oath of Office to Mr. Patrick Morrow.

XVIII. Resolution Reading

WHEREAS, Chairman Valencia Sarpy Jones was appointed by Governor John Bel Edwards to the LSU Board of Supervisors on August 22, 2016, for the 4th Congressional District; and

WHEREAS, Chairman Jones was reappointed to the LSU Board of Supervisors by Governor John Bel Edwards in June 2022 to serve for another six-year term, representing the 4th Congressional District; and

WHEREAS, Chairman Jones was chosen among her peers as the Chair-Elect and assumed the role of Chairman on September 9, 2022, subsequently making her the First Black Alumna of LSU to chair the Louisiana State University Board of Supervisors; and

WHEREAS, Chairman Jones' leadership focuses encompassed the entirety of LSU's 8 campuses, Agriculture research, Civil Rights and Title IX advocacy, medical and health innovation expansion in North Louisiana and the encouragement of research and development across all 64 parishes; and

WHEREAS, Chairman Jones is a very active member in her community serving on numerous boards and in many organizations including; the Natchitoches Regional Medical Center Board of Commissioners, Historic Downtown Development District Commission, the National Association of Insurance and Financial Advisors and is a dedicated member of the Service League of Natchitoches; and

WHEREAS Chairman Jones cultivated a unique and inclusive style of Board Governance, demonstrated a profound level of professionalism and leadership and strengthened the operative functions of the Board; and

WHEREAS Chairman Jones added the LSU Pershing Rifle Color Guard to the Board of Supervisors board meetings as a permanent reminder of LSU's commitment to the United States of America, the United States Armed forces, the United States Veterans, great State of Louisiana servicemen and veterans, and the Louisiana State University Reserve Officer Training Corps; and

WHEREAS Chairman Jones successfully led historic diplomatic efforts for LSU, meeting with legislative partners across the State of Louisiana and partnering with the President's Scholarship First Bus tour, where she hosted a luncheon for Northwest Louisiana stakeholders in her hometown and parish of Natchitoches, Louisiana; and

WHEREAS Chairman Jones witnessed and heavily supported the 2023 LSU Women's Basketball team as they won the first Basketball National Championship in school history and witnessed and greatly supported the 2023 LSU Baseball team as they won their seventh National Championship; and

WHEREAS Chairman Jones led efforts for her and fellow Board members to meet with congressional delegates and leadership in Washington D.C. as well as the President and Vice President of the United States of America following the 2023 NCAA Women's Championship; and

WHEREAS, Chairman Jones spotlighted medical education and research, meeting with the LSU Health Sciences Shreveport leadership and touring and supporting the new Center for Medical Education and Emerging Viral Threats; and

WHEREAS Chairman Jones developed a poised, tactical and positive environment resulting in record legislative appropriations and donations which exceeded \$300 million; and

WHEREAS, Chairman Jones championed efforts to increase opportunities for all prospective students, particularly those from historically underrepresented or resource-challenged backgrounds; and

WHEREAS, Chairman Jones advocated for extended educational access for all students, and conferred degrees on the largest and most diverse graduating classes and

NOW THEREFORE BE IT RESOLVED, the Board of Supervisors of Louisiana State University and Agricultural & Mechanical College wishes to express its deepest gratitude and appreciation to Chairman Valencia Sarpy Jones for her tireless devotion, exemplary leadership, and unequalled service in support of the entire university system and for fulfilling her role as Chairman while exhibiting the highest standards of elegance, determination, and professionalism.

XIX. Adjournment

Without further business before the Board, the meeting was adjourned.



Board of Supervisors

PERSONNEL ACTIONS REQUIRING BOARD APPROVAL

BOARD OF SUPERVISORS MEETING | OCTOBER 20, 2023

Personnel Actions Requiring Board Approval
per PM-69

October 20th, 2023

Personnel Actions Requiring Board Approval per PM-69
October 20th, 2023

LSU A&M
New Appointments

<u>Name</u>	<u>Title</u>	<u>Effective Date</u>	<u>Compensation</u>		<u>%Change</u>
			<u>Current</u>	<u>Proposed</u>	
Monique Fondren Cain	Executive Director & Senior Advisor	11/1/2023	\$204,812	\$250,000	22%



Board of Supervisors

REPORTS TO THE BOARD

BOARD OF SUPERVISORS MEETING | OCTOBER 20, 2023



Finance & Administration

Report to the Board October 20, 2023

LSU Supplier Diversity Spend Report for twelve-month period ending June 30th

	LSU & Related		LSU HSC-NO		LSU HSC-S	
FY21 - Combined Tier 1 & 2 Spend	\$ 26,225,446.97	11.8%	\$ 4,272,209.94	10.5%	\$ 2,562,491.52	7.2%
FY22 - Combined Tier 1 & 2 Spend	\$ 43,143,012.86	19.8%	\$ 12,265,994.00	30.0%	\$ 2,174,394.68	5.4%
FY23 - Combined Tier 1 & 2 Spend	\$ 56,924,987.19	24.0%	\$ 19,807,691.00	33.9%	\$ 4,260,595.92	11.1%

Notes:

1. Related campuses include LSU – Alexandria (LSUA), LSU – Eunice (LSUE), LSU – Shreveport (LSUS), LSU Agricultural Center (AgCenter), Pennington Biomedical Research Center (PBRC) – campuses using the Workday financial system.
2. Figures do not include impact from LaCarte card purchases.
3. Tier 2 Spend primarily includes master contracts. It does not reflect total spend related to subcontractors.
4. Increased Tier 1 activity for LSUHSC – New Orleans as a result of purchases for new construction.
5. **System-wide Tier 1 direct spend for FY23 was \$80.9M, an increase of \$23,409,873 (40%) from FY22 (\$57.5M)**



Finance & Administration
Supplier Diversity Updates

1. Diverse Supplier Database (Supplier.IO-MBE)

- a. Semi-annual database review has been initiated to identify newly certified diverse suppliers and expired supplier certifications. Workday and PeopleSoft supplier databases will be refreshed per updated results.
- b. Temporary Single Sign-On access is still in place to grant shared access to all campuses.

2. Tier 2 Supplier Diversity Engagement

- a. We are continuing to engage with master contract suppliers to increase diverse supplier participation and opportunities by enhancing Workday platforms to highlight diverse products, establish custom catalogs or utilize diverse suppliers in other facets of the contract (e.g., transportation or installation services).
- b. We are continuing to establish diverse supplier subcontractor reporting requirements as contracts are awarded or in re-negotiations with major contract suppliers.

3. Events/Outreach

- a. Conducted monthly One-on-One sessions to meet newly registered diverse suppliers and strategize how to connect them within the LSU network. Introduction emails were sent to internal departments that can benefit from their services and externally to procurement contacts at all campuses to make them aware of the new relationships.
- b. Exhibited at the Baton Rouge Area Chamber Economic Inclusion Symposium to network with diverse suppliers, other large procurers, and resource partners. Participated in matchmaking sessions with suppliers.
- c. Exhibited at the U.S. Small Business Administration HBCU Small Business Expo to network with diverse suppliers, other large procurers, and resource partners; Participated in panel entitled "Doing Business with Universities and Public Institutions".

4. Resource Partnerships

- a. *Athletics Supplier Diversity Committee* – participated in monthly committee meeting to discuss Athletic department spend and diversity efforts in the SEC; provided guidance and updates on campus diversity efforts.
- b. *Baton Rouge Area Chamber (BRAC)* – participated in quarterly Small Business Ecosystem meeting to discuss small business opportunities, connecting them to major procurers and local resources to advance company business acumen.
- c. *Baton Rouge Procurement Opportunities Partnership (BRPOP)* – participated in bi-monthly committee meeting to discuss procurement best practices, challenges and creating opportunities for local small businesses.
- d. *Women's Business Enterprise Council (WBEC) Certification Committee* – participated in monthly committee meeting to review, discuss, and vote on new/renewal applications for WBE certification.

5. Public Private Partnerships Projects

- a. Charity Hospital Redevelopment Project
 - Meetings are temporarily suspended until funding issues are resolved.
- b. LSU Utilities Modernization Project
 - Participated in monthly meetings with project DBE Compliance Committee to review monthly reports of DBE spend and engagement and upcoming outreach activities or procurement opportunities.
- c. LSU University Lakes Project
 - Collaborated with project management to advertise employment and procurement opportunities in weekly newsletter to diverse supplier database.



Finance & Administration

Supplier Diversity Year in Review

Diverse Suppliers recently awarded contracts exceeding \$250K

- Deumite Construction LLC (SBE) – Digital Media Center Cyber Security Renovations
- Hill Construction Company LLC (SBE) – Mobility Plan Phase I Implementation - Union Hub
- Iconvergence Inc (SBE) – Switches
- Parking Guidance Systems LLC (WBE) – Parking System
- The Luster Group LLC (SBE) – Landscape Services North Lot Paving Improvements

Diverse Suppliers recently awarded contracts exceeding \$100K

- ARCCO Company Services Inc - ARCCO Power Systems (SBE) – Annual testing/inspection of emergency power systems
- Baton Rouge Printing Co Inc (SBE) – Direct Mail Fulfillment Term Contract
- Deumite Construction LLC (SBE) – Hatcher Hall 3rd Floor Renovations for African & African American Studies
- J & W Contractors Inc (SBE) - Early Childhood Education Laboratory Preschool Toddler Playground
- Southern University and A & M College - Grants & Sponsored Programs (Historically Black College & University (HBCU)) – United States Small Business Administration (SBA) Subaward
- Southern University and A & M College - Southern University @ Shreveport (HBCU) – SBA Subaward
- Texas Market Research Group LLC - Reconnaissance Market Research (SBE) – Louisiana Health Insurance Survey Collection
- White Group Partners LLC (SBE) – Chemistry & Materials Building Room 168 Renovations
- World Wide Technology LLC (MBE) – Tureaud Hall Switching AV System Upgrade

LSU Classification Category Codes:

- MBE - Minority Business Enterprise
- WBE - Women-Owned Business Enterprise
- DBE - Disadvantaged Business Enterprise
- LGBTBE - Lesbian, Gay, Bisexual, Transgender-Owned Business Enterprises
- VOB - Veteran-Owned Business
- DOBE - Disability-Owned Business Enterprise
- SBE - Small Business

Accomplishments

- Onboarded approximately 117 new diverse suppliers
- Completed database clean-up; validating certificates for 2,680 suppliers in the database
- Resolved remaining outstanding Internal Audit Findings
- Launched system-wide database tool, Supplier.io Explorer Professional, to assist in department search for diverse suppliers; created webpage and training materials to assist in user navigation
- Enhanced Workday diverse supplier reports to reflect new Workday classification structure and added a Diverse Spend by Spend Category report for deeper analysis of spend breakdown
- Launched One-on-One Sessions to meet monthly with diverse suppliers and connect them to key department stakeholders, campuses, and affiliates
- Collaborated with Major/Master Contract suppliers to support LSU Supplier Diversity program
 - Increased number of suppliers who can provide department level diversity spend reporting – Grainger, Office Depot and VWR
 - Facilitated purchase partnership between Dell and a diverse supplier, World Wide Technology LLC (MBE), for High Computing System
 - Negotiated 10-year funding in Dining Services contract with Chartwells to support SDP initiatives to outreach, educate, and retain diverse suppliers, build program awareness and collaborate with other organizations with programs geared towards diverse suppliers
 - Discussed diverse subcontractor partnership opportunities with VWR, Fisher Scientific and Office Depot



Finance & Administration

- Collaborated with Public Private Partnership affiliates to support diversity goals, outreach, and monitor compliance with LSU Supplier Diversity Policy
 - Charity Hospital Redevelopment Project
 - Utilities Modernization Improvements Project
 - University Lakes Project

Events

Internal

- Hosted Diverse Construction Contractors Forum at Lod Cook Conference & Hotel free to diverse suppliers and attendees
- Hosted monthly One-on-One sessions with registered LSU diverse suppliers; Met with 61 suppliers
- Hosted departmental trainings on Diversifying Spend
- Presented Supplier Diversity updates at Quarterly Procurement Roundtable meetings

External

- Presented to LSU College of Business Entrepreneurship Classes on LSU Supplier Diversity Programs and System Policy Initiatives
- Exhibited at the 2022 Baton Rouge Metropolitan Airport 17th Annual Business Opportunities Workshop
- Hosted a webinar with LA Department of Transportation to the Disadvantaged Business Enterprise (DBE) network on Doing Business with LSU
- Exhibited at the 1st U.S. Women's Chamber of Commerce Business Summit
- Exhibited at the LA Department of Transportation "It's All about the DBE in 2023!" informational and networking event
- Served as judge for Young Entrepreneurs Academy small business Elevator Pitch showcase & explained diverse supplier certifications, how to do business with LSU and potential procurement opportunities
- Participated in Federal Highway Administration/Department of Transportation DBE certification training
- Exhibited at Louisiana Economic Development Louisiana Statewide Business Summit
- Exhibited at U.S. Small Business Administration 18th Annual Business & Procurement Conference
- Exhibited at Baton Rouge Area Chamber Economic Inclusion Symposium
- Exhibited at SBA Small Business Expo and participated in panel discussions on Doing Business with Higher Education and Public Institutions

**Report to LSU Board of Supervisors:
All Campuses Last 3 Years**

Transfers of Title to Immovable Property

Updated September 29, 2023

2023-2024

Campus	Transfer Description	Value	State ID	Site Code	Approved by	Transfer Date
LSU	Act of Donation-PMAC Media Seating Relocation	\$ 74,255			Pres. Tate	06/27/23
	Act of Donation-LSU Golf Practice Facility Interior Renovations	\$ 170,322			Pres. Tate	06/27/23
	Act of Donation-LSU PMAC Retractable Bleacher Repairs	\$ 60,000			Pres. Tate	09/07/23
	Act of Donation- Tiger Stadium New Loge Seating Areas	\$ 266,214			Pres. Tate	09/11/23
	Act of Donation-Charles McClendon Outdoor Practice Facility Synthetic Turn Replacement and Related Improvements	\$ 1,469,184			Pres. Tate	06/27/23
		\$ 2,039,975				

2022-2023

Campus	Transfer Description	Value	State ID	Site Code	Approved by	Transfer Date

2021-2022

Campus	Transfer Description	Value	State ID	Site Code	Approved by	Transfer Date

**Report to LSU Board of Supervisors:
All Campuses Last 3 Years**

Approval of Requests for Timber Sales

Updated September 29, 2023

2023-2024							
Campus	Location	Parish	Acreage	Payment	Designated Timber to be Removed:	Approved by	Approval Date
AgCenter	Bob R. Jones Idlewild Research Station	East Feliciana	2 sites: 52 acres & 40 acres	about \$65,000	Pine saw timber, pine pulpwood, hardwood saw timber and hardwood pulpwood.	Matt Lee, VP of Agriculture & Asst VP Patrick Martin Real Estate	6/15/2023
2022-2023							
Campus	Location	Parish	Acreage	Payment	Designated Timber to be Removed:	Approved by	Approval Date
2021-2022							
Campus	Location	Parish	Acreage	Payment	Designated Timber to be Removed:	Approved by	Approval Date

**Report to LSU Board of Supervisors:
All Campuses Last 3 Years**

Capital Improvements Projects above \$175,000

Updated September 29, 2023

2023-2024		AMOUNT APPROVED	FUNDS SOURCE	APPROVED BY	APPROVAL DATE
LSU	Evangeline Circle Horseshoe ADA Sidewalk & Site Improvement	\$180,000	Facility Access Fee	Kimberly Lewis	07/28/23
	Thomas Boyd Hall Suite 146 Renovation	\$335,000	Operational Funds	Kimberly Lewis	07/11/23
	Tiger Park Stadium Premium Seating Replacement	\$225,000	Auxiliary Funds	Kimberly Lewis	07/28/23
	Total LSU	\$740,000			
LSUS	Business Education West Side Roof Replacement	\$194,120	Operational Funds	Exec. VP Lewis	09/10/23
	Total LSUS	\$194,120			
AgCenter	Generator Greenhouses	\$179,925	Self-Gen- Rice Research Foundation Board	Exec. VP Lewis	07/11/23
	Milling and Quantative Genetics Labs Renovation	\$250,000	Self-Gen- Rice Research Board	Exec. VP Lewis	07/12/23
	Rice Research Station Shop Building	\$700,000	Self-Gen- Donations	Exec. VP Lewis	03/31/23
	Shop Building	\$700,000	Self-Generated-Donated	Exec. VP Lewis	09/05/23
	New Greenhouse	\$550,000	Self-Generated-Rice Foundation	Exec. VP Lewis	08/29/23
	Total HSCNO	\$2,379,925			
TOTAL CAPITAL PROJECTS APPROVALS 2022-2023		\$3,314,045			

2022-2023			AMOUNT APPROVED	FUNDS SOURCE	APPROVED BY	APPROVAL DATE
LSU	Alex Box: Repairs & Waterproofing		\$220,000	Auxilliary Funds	Kimberly Lewis	01/30/23
	Athletic Admin Bldg: 2nd Floor Renovations		\$247,000	Auxilliary Funds	Kimberly Lewis	09/12/22
	Chemical Engineering Bldg: CO2 / Water Electrolysis Laboratory Renovation		\$862,400	Other: EDA Grant	Kimberly Lewis	01/30/23
	Chemical Engineering Building- Shop 164 Renovations		\$275,000	Engineering Excellence Fund	Exec. VP Lewis	08/02/22
	Chemical Engineering Building- Shop 164 Renovations Revised		\$785,000	Operational Funds	Exec. VP Lewis	10/10/22
	Choppin Hall Room 607 & 703 Lab Renovations		\$359,892	Operational Funds	Exec. VP Lewis	11/04/22
	Digital Media Center: Cyber Security Renovations		\$275,000	Other: LED Grant Digital Media Cetner & Virtual Projection Project	Exec. VP Lewis	11/14/22
	Digital Media Center: Cyber Security Renovations revised		\$407,000	LED-Digital Media Ctr Cyber/Virtural Production Project	Exec. VP Lewis	05/09/23
	Landscape Svcs. North Lot Parking Improvements		\$400,000	Auxilliary Funds	Exec. VP Lewis	04/26/23
	Mobility Implementation Phase 1 Union Hub		\$475,000	Auxilliary Funds	Exec. VP Lewis	12/19/22
	Nicholson Hall 4th Floor Renovations		\$207,000	Operational Funds	Exec. VP Lewis	03/13/23
	Pleasant Hall: 2nd Floor Renovations for PTS		\$576,000	Auxilliary Funds	Exec. VP Lewis	12/13/22
	SVM: Main Bldg. 2nd & 3rd Floor Back-up Unit Installation		\$330,000	Operational Funds	Exec. VP Lewis	11/03/22
	SVM: Main Bldg. AHU 3 Replacement		\$450,000	Operational Funds	Exec. VP Lewis	11/03/22
	Thomas Boyd Hall Suite 146 Renovations		\$270,000	Auxiliary Funds	Exec. VP Lewis	05/09/23
	Tiger Stadium North Stadium Sanitary Sewer Replacement		\$250,000	Auxilliary Funds	Exec. VP Lewis	04/10/23
	U-High Lab School: Boiler Replacement		\$500,000	Other: ESSER III Grant Funding	Exec. VP Lewis	12/13/22
	U-High Lab School: Football Field Turf Replacement		\$800,000	Other: ESSER III Grant	Exec. VP Lewis	10/27/22
	U-High Lab School: Replace Flooring Multiple Rooms		\$176,000	Other: ESSER Grant	Exec. VP Lewis	03/20/23
	UREC New Challenge Course 2022		\$250,000	Auxiliary Funds	Exec. VP Lewis	08/02/22
	UREC New Challenge Course 2022 Budget Change revised from \$250,000		\$499,500	Auxiliary Funds	Exec. VP Lewis	02/23/23
		Total LSU	\$8,614,792			
LSUA	Lot 7 Resurfacing		\$487,500	S-G: Restricted Fees: Parking/Lights/Sidewalk accoung.	Exec. VP Lewis	10/25/22
		Total LSUA	\$487,500			
LSUE	HVAC Air Purification Systems for Major Buildings		\$215,000	HEERF III Funding	Exec. VP Lewis	12/01/22
		Total LSUA	\$215,000			

LSUS	Baseball Artificial Turf		\$390,700	Auxilliary Funds	Exec. VP Lewis	09/28/22
	Pool Closure- budget increase from \$318,000		\$499,900	Operational Funds	Exec. VP Lewis	11/14/22
	Science Annex Building- budget increase from \$385000		\$970,000	Operational Funds	Exec. VP Lewis	01/23/23
	University Center Heating Water Boilers		\$300,000	Operational Funds	Exec. VP Lewis	06/13/22
		Total LSUS	\$2,160,600			
HSCNO	Dental Clinic HSRA Grant Space		\$879,200	Operational Funds	Exec. VP Lewis	01/23/22
	Lions Eye Center 2nd-4th Floor Restroom Renovations		\$423,000	Operational Funds	Exec. VP Lewis	02/15/23
		Total HSCNO	\$1,302,200			
TOTAL CAPITAL PROJECTS APPROVALS 2022-2023			\$11,477,892			

2021-2022		AMOUNT APPROVED	FUNDS SOURCE	APPROVED BY	APPROVAL DATE	
LSU	Alex Box: Exterior Councourse Stair Repairs		\$216,000	MRA Funds	Exec. VP Lewis	05/25/22
	Chemistry & Materials Building: Room 144C Renovations		\$286,000	Restricted, Federal Grants, Contracts, Research	Interim Exec. VP Torres	01/19/22
	Child Care Center Playground Renovations		\$250,000	Other: Grant for playgrounds	Exec. VP Lewis	06/15/22
	ECA Bldg 3 & 12 Roof Repairs		\$550,000	Auxiliary Funds	Exec. VP Lewis	02/11/22
	French House Honors College Site & Landscaping Improvements Phase 1a		\$460,000	Ancillary Self Generated Revenue	Interim Exec. VP Torres	09/07/21
	Himes, Lockett and Prescott-1st Floor Restrooms Modifications for ADA Compliance		\$360,000	Facility Access Fee-Auxiliary Self Gen Funds	Interim Exec. VP Torres	10/06/21
	Johnston Hall 2nd-3rd Floor SW Wing Renovation		\$198,000	Other: Indirect Cost Allocation	Exec. VP Lewis	05/10/22
	Life Sciences Building-Room 613 Lab Renovations		\$260,000	Operational Funds	Interim Exec. VP Torres	12/01/21
	Life Sciences Building-Rooms 512 & 515 Lab Renovations		\$225,000	Operational Funds	Interim Exec. VP Torres	01/19/22
	PERTT Electrical Improvements, Phase 2		\$280,000	Auxiliary Funds	Exec. VP Lewis	06/14/22
	Residential College: Boiler Replacement Design		\$250,000	Auxiliary Funds	Exec. VP Lewis	05/10/22
	Student Union 4th Floor Renovation for Student Affairs		\$250,000	Auxiliary Funds	Exec. VP Lewis	05/10/22
	Student Union Ballroom Renovations		\$880,000	Auxiliary Funds	Exec. VP Lewis	03/15/22
	SVM: Pharmacy Relocation to Main Lobby		\$350,000	Self-Generated	Exec. VP Lewis	02/11/22
	SVM: Rm 2536, 2538, 2538A, 2540 Lab Renovations		\$190,000	Operational Funds	Exec. VP Lewis	04/13/22
	Tiger Stadium Level 3B Structural Repairs		\$455,000	Auxiliary Funds	Interim Exec. VP Torres	01/19/22
	WCA Bldg 5: Roof Repairs		\$245,000	Auxiliary Funds	Exec. VP Lewis	02/11/22
		Total LSU	\$5,705,000			
LSUA	HVAC UVC Additions		\$226,500	CARES Act Funding	Interim Exec. VP Torres	01/22/22
	Room UVC Additions		\$200,000	CARES Act Funding	Interim Exec. VP Torres	01/23/22
	Room UVC Additions Budget Increase		\$90,000	CARES Act Funding	Exec. VP Lewis	04/21/22
		Total LSUA	\$516,500			
LSUE	Health Technology Building Gas System Upgrade/Lab Reno		\$187,000	CARES Act Funding	Exec. VP Lewis	\$44,694
	Plumbing Fixture Upgrade		\$268,920	CARES Act Funding	Interim Exec. VP Torres	11/01/21
		Total LSUE	\$455,920			
LSUS	Bronson Hall Elevator Equipment & cab Upgrades		\$290,000	Operational Funds	Interim Exec. VP Torres	07/26/21

	HPE Building Equipment Pavilion Climate Chamber budget <i>additional funds added to original \$203,000</i>		\$92,000	Operational Funds	Interim Exec. VP Torres	07/05/21
	New Science Building Annex		\$385,000	Operational Funds	Exec. VP Lewis	05/13/22
	Pool Closure		\$318,000	Operational Funds	Exec. VP Lewis	02/22/22
		Total LSUS	\$1,085,000			
HSCNO	Allied Health/School of Nursing (AHSON) 3rd Fl. Coffee Kiosk		\$175,000	Operational Funds	Exec. VP Lewis	05/24/22
	Lions Eye Center 1st Floor Restrooms		\$450,000	Operational Funds	Exec. VP Lewis	05/24/22
	Medical Education Building (MEB) 4th Fl. Restrooms		\$278,000	Operational Funds	Exec. VP Lewis	05/24/22
		Total HSCNO	\$903,000			
TOTAL CAPITAL PROJECTS APPROVALS 2021-2022			\$8,665,420			

**Report to LSU Board of Supervisors:
All Campuses Last 3 Years**

Design Contracts

Updated September 29, 2023

2023-2024		Reimbursables			Designer	Approved by	Approval Date
		Designer Fee	or other fees	Revised Total			
LSU A&M	Innovation Park: Master Planning and Drainage Development	\$107,500	\$1,000	\$108,500	CSRS, Inc.	AVP Mahaffey	09/05/23
	SVM: Equine Institute Concept Presentation	\$22,000		\$22,000	Tipton Associates APAC	AVP Mahaffey	09/05/23
	PERTT Equipment Yard: CO2 Wellbore and Flow Loop Installation	\$42,662	\$120	\$42,782	Forte and Tablada	AVP Mahaffey	09/01/23
	Engineering Construction Management Building: Program	\$22,500	\$1,200	\$23,700	Coleman Partners Architects	AVP Mahaffey	07/05/23
	Subtotal	\$194,662	\$2,320	\$196,982			
LSU A&M	Lab Ventilation and Fume Hood Replacement, ECE Building	121,440.00		\$121,440	Salas O'Brien	Architect Selection Bd.	07/12/23
	Replacement of Air Handling Units, ML Trail Clinical Sciences Research Building	61,278.00		\$61,278	GVA Engineering, LLC	Architect Selection Bd.	07/12/23
	Subtotal	\$182,718	\$0	\$182,718			
Total LSU A&M		\$377,380	\$2,320	\$379,700			
HSCNO	MEB 1sr Floor Environmental Health & Safety Office Relocation	\$23,660		\$23,660	GVA Engineering, LLC	AVP Mahaffey	08/07/23
	Total HSCNO	\$23,660	\$0	\$23,660			
LSUS	Business Education West Side Roof Replacement	\$22,606		\$22,606	McNew Architecture	AVP Mahaffey	09/14/23
	Subtotal LSUS	\$22,606	\$0	\$22,606			
LSUS	Boiler Installation Renovation Busines Administration & Education Building and Bronson Hall	\$35,579	\$0	\$35,579	Aillet, Fenner, Jolly & McClelland, Inc.	Architecture Selection Bd	04/14/23
	Subtotal LSUS	\$35,579	\$0	\$35,579			
Total LSUS		\$58,185	\$0	\$58,185			
Total All 2022-2023		\$459,225	\$2,320	\$461,545			

**Report to LSU Board of Supervisors:
All Campuses Last 3 Years**

Design Contracts

Updated September 29, 2023

2022-2023		Designer Fee	Reimbursables or other fees	Revised Total	Designer	Approved by	Approval Date
LSU A&M	Alex Box: Exterior Concourse Stair Repairs	\$15,500	\$500	\$16,000	Grace Hebert Curtis Architects LLC	AVP Mahaffey	10/03/22
	Bernie Moore: Structural Preventative Maintenance	\$13,711	\$1,000	\$14,711	Wardlaw Lasseigne & LeBouef, LLC	AVP Mahaffey	11/03/22
	Chemistry & Materials Bldg: Room 168 Renovations	\$15,189	\$1,000	\$16,189	Bradley Blewster & Associates	AVP Mahaffey	10/07/22
	Choppin Hall: Room 607 and 703 Lab Renovations	\$40,845	\$13,450	\$54,295	Mougeot Architecture	AVP Mahaffey	10/31/22
	College of Science: Masterplan Study Update 2023	\$31,500	\$0	\$31,500	Holly & Smith Architects	AVP Mahaffey	01/23/23
	Digital Media Center: Cyber Security Renovations	\$25,800	\$0	\$25,800	Coleman Partners Architects	AVP Mahaffey	11/10/22
	Howe Russell Kniffen: Building System and Infrastructure Study	\$16,500	\$0	\$16,500	Holly & Smith Architects	AVP Mahaffey	11/14/22
	Mobility Implementation Phase 1 - Union Hub	59,200.00	\$0	\$59,200	CARBO Landscape Architecture	AVP Mahaffey	12/12/22
	ORED: Master Planning Study 2023	62,500.00	\$0	\$62,500	Facility Programming LTD	AVP Mahaffey	03/07/23
	SVM: Grant Application For DLAM Vivarium Lab Expansion - 2023	35,000.00	\$0	\$35,000	Washer Hill Lipscomb Cabaniss Arch. LA LLC	AVP Mahaffey	02/20/23
	SVM: Master Plan Update 2022	227,200.00	\$0	\$227,200	Dober Lidsky Mathey	AVP Mahaffey	10/03/22
	Subtotal	\$542,945	\$15,950	\$558,895			
LSU A&M	Knapp Hall: Clay Tile Roof Replacement (DM)	61,912.00	\$0	\$61,912	Holden Architects	Architect Selection Bd.	01/18/23
	Nicholson Hall: Roof Replacement (DM)	47,664.00	\$0	\$47,664	Fusion Architects	Architect Selection Bd.	01/18/23
	Elevator Repairs and Code Upgrades, Hebert Law Center East Annex	41,228.00	\$0	\$41,228	King Consulting Engineering, LLC + Albert Architecture & Urban Design APLLC	Architect Selection Bd.	01/18/23
	Prescott Hall: HVAC Repairs and Upgrades (DM)	56,039.00	\$0	\$56,039	Henry C Eyre Consulting Engineers	Engineer Selection Bd.	01/11/23
	Streetscape Repairs, Powerfouse Lane to North Stadium	150,069.00	\$0	\$150,069	Duplantis Design Group, PC	Engineer Selection Bd.	01/11/23
	SVM Auditorium, Restroom and Lab Renovations	\$287,538	\$0	\$287,538	Bradley-Blewster & Associates	Architect Selection Bd.	07/20/22
	SVM Junior Surgery Renovations	\$328,413	\$0	\$328,413	Hoffpaur Studio LLC	Architect Selection Bd.	07/20/22
	U High: High School Clay Tile Roof Replacement (DM)	59,728.00	\$0	\$59,728	Post Architects LLC	Architect Selection Bd.	01/18/23
	Subtotal	\$1,032,591	\$0	\$1,032,591			
	Total LSU A&M	\$1,575,536	\$15,950	\$1,591,486			
AgCenter	Food Innovation Center	\$187,785	\$0	\$187,785	BBI Architects	Architect Selection Bd.	01/18/23
	Total AgCenter	\$187,785	\$0	\$187,785			
HSCNO	Lions Eye CenterWest Restrooms Renovations- 2nd, 3rd, 4th Floors	\$24,250	\$0	\$24,250	Mathes Brierre Architects	AVP Mahaffey	02/15/23
	Total HSCNO	\$24,250	\$0	\$24,250			
LSUE	New Baseball Stadium Athletic Complex Facility	\$699,071	\$0	\$699,071	RHH Architects, APAC	Architecture Selection Bd	09/21/22
	Total LSUE	\$699,071	\$0	\$699,071			
LSUS	Baseball Infield Turf Conversion	\$36,693	\$0	\$36,693	Simpson Sports Engineering, LLC	AVP Mahaffey	08/30/22
	Baseball Outfield Re-Grading	\$13,800	\$0	\$13,800	Nixon Engineering Solutions	AVP Mahaffey	03/08/23
	Student Success Center Advising Area Renovation	\$19,500	\$0	\$19,500	Prevot Design	AVP Mahaffey	05/02/23
	Business Engagement Center	\$45,156	\$0	\$45,156	Sutton, Beebe Babin Architects, LLC	AVP Mahaffey	12/13/22
	Subtotal LSUS	\$115,149	\$0	\$115,149			
LSUS	Science Building Research Annex	\$35,579	\$0	\$35,579	Sutton Beebe Babin Architects, LLC	Architecture Selection Bd	11/16/22
	Subtotal LSUS	\$35,579	\$0	\$35,579			
	Total LSUS						
	Total All 2022-2023						

**Report to LSU Board of Supervisors:
All Campuses Last 3 Years**

Design Contracts

Updated September 29, 2023

2021-2022 Design Contracts		Designer Fee	Reimbursables or other fees	Revised Total	Designer	Approved by	Approval Date
LSU A&M	Chemistry & Materials Bldg Room 144C Renovations	\$31,765	\$1,000	\$32,765	Bradley-Blewster & Associates	AVP Mahaffey	02/02/22
	College of Science Masterplan Study Update 2021 Planning Study	\$74,650	\$0	\$74,650	Coleman Partners Architects	AVP Mahaffey	11/03/21
	Foster Hall Basement, Frst, Second Floor Renovations 2022	\$31,765	\$0	\$31,765	Bradley-Blewster & Associates	AVP Mahaffey	02/02/22
	French House Honors College Site & Landscaping Improvements Phase 1a	\$37,800	\$18,315	\$56,115	CARBO Landscape Architecture	AVP Mahaffey	08/27/21
	Himes, Lockett & Prescott: 1st Floor Restrooms Modifications for ADA Compliance	\$39,165	\$7,000	\$46,165	GD Architecture LLC	AVP Mahaffey	10/29/21
	John P. Laborde Energy Law Center Renovations	\$34,409	\$1,500	\$35,909	Tipton Associates APAC	AVP Mahaffey	08/13/21
	Johnston Hall 2nd & 3rd Floor SW Wing Renovations	\$14,000	\$4,000	\$18,000	Tipton Associates APAC	AVP Mahaffey	05/10/22
	Lab School STEAM K-12 Education Outreach Center Planning Study	\$24,500	\$0	\$24,500	Tipton Associates APAC	AVP Mahaffey	03/29/22
	Music Building: Hurricane Ida Roof Repair	\$18,600	\$5,000	\$23,600	Coleman Partners Architects	AVP Mahaffey	11/03/21
	Nelson Memorial Bldg. Renovations	\$25,813	\$23,780	\$49,593	Didier Architecture	AVP Mahaffey	04/18/22
	Residential College Boiler Replacement	\$15,500	\$0	\$15,500	IMC Consulting Engineers	AVP Mahaffey	05/09/22
	Student Union Ballroom Renovations	\$77,935	\$26,840	\$104,775	NANO LLC	AVP Mahaffey	03/17/22
	SVM Grant Application for DLAM Vivarium Lab Expansion Planning	\$17,000	\$0	\$17,000	Washer Hill Lipscomb Cabaniss Arch. LA LLC	AVP Mahaffey	03/10/22
	SVM Pharmacy Relocation to Main Lobby	\$36,513	\$2,500	\$39,013	Tipton Associates APAC	AVP Mahaffey	02/01/22
	Tiger Stadium Level 3B Structural Repairs	\$42,163	\$1,000	\$43,163	Wardlaw Lasseigne & LeBourf LLC	AVP Mahaffey	01/24/22
	West Canal Gas Piping Relocation	\$22,208	\$0	\$22,208	Infinity Engineering Consultants	AVP Mahaffey	10/19/21
	Subtotal	\$543,787	\$90,935	\$634,722			
LSU A&M	Frey UPS1 Replacement and System Upgrades	\$131,442	\$0	\$131,442	Assaf Simoneaux Tauzin & Associates (AST)	Engineer Selection Bd.	07/14/21
	Roofing Repairs and Building Waterproofing Life Sciences Annex	\$11,949	\$0	\$11,949	Post Architects, LLC	Architect Selection Bd.	05/18/22
	Campus-wide Security Lighting	\$258,958	\$0	\$258,958	Carbo Landscape Architecture	Landscape Arch. Select. Bd.	09/22/21
	SCP-Deferred Maintenance for Infrastructure, Renovation and Streets	\$529,436	\$0	\$529,436	Remson Haley Herpin Architects APAC	Architect Selection Bd.	05/18/22
	Student Union Ballroom Renovations	\$77,935	\$26,840	\$104,775	NANO LLC	Architect Selection Bd.	05/18/22
	Student Union Roof Replacement	\$164,881	\$0	\$164,881	BE-CI, Inc. & Neal Johnson LLC, AJV	Architect Selection Bd.	01/19/22
	Subtotal	\$1,174,601	\$26,840	\$1,201,441			
	Total LSU A&M	\$1,718,388	\$117,775	\$1,836,163			
HSCNO	Lions Eye Center New 1st Floor Restroom	\$22,775	\$0	\$22,775	Mathes Brierre Architects	AVP Mahaffey	04/25/21
	Medical Education Bldg. 4 Floor Restrooms Repairs	\$13,600	\$0	\$13,600	Mathes Brierre Architects	AVP Mahaffey	05/03/21
	Subtotal HSCNO	\$36,375		\$36,375			
HSCNO	Campus Storm Water Infrastructure Upgrades	231927	\$0	\$231,927	CSRS, LLC	Engineer Selection Bd.	01/12/22
	Medical Education Bldg. Laboratory Renovations	\$926,559	\$0	\$926,559	Gould Evans + Perkins Eastman, AJV	Engineer Selection Bd.	09/15/21
	Roof Replacement Lions Eye Center	\$76,405	\$0	\$76,405	Lachin Architects, APC	Architect Selection Bd.	11/17/21
	Subtotal HSCNO	\$1,234,891	\$0	\$1,234,891			
	Total HSCNO	\$1,271,266	\$0	\$1,271,266			
HSCS	Stonewall Facility Renovations & Additions	\$78,714	\$0	\$78,714	Prevot Design Services, APAC	Architect Selection Bd.	07/21/21
	Renovation of Gross Anatomy Lab	\$98,313	\$0	\$98,313	Aillet, Fenner, Jolly & McClelland, Inc.	Architect Selection Bd.	10/13/21
	Replacement of Air Handler 1, C-Building	\$274,143	\$0	\$274,143	Aillet, Fenner, Jolly & McClelland, Inc.	Engineer Selection Bd.	04/20/22
	Comprehensive Emergency Water Supply Improvements	\$544,559	\$0	\$544,559	Prevot Design Services	Architect Selection Bd.	05/18/22
	Total HSCS	\$995,729	\$0	\$995,729			
LSUA	New Student Success Center	\$515,616	\$0	\$515,616	Ashe Broussard Weinzettle Architects	Architect Selection Bd.	11/17/21
	Total LSUA	\$515,616	\$0	\$515,616			
LSUE	Health Technology Building Medical Gas System Upgrade	\$16,800	\$0	\$16,800	WHLC Architecture	AVP Mahaffey	04/25/22
	Touchless Plumbing Fixture Project	\$26,143	\$0	\$26,143	M&E Conculting	AVP Mahaffey	10/29/21
	Total LSUE	\$42,943	\$0	\$42,943			

**Report to LSU Board of Supervisors:
All Campuses Last 3 Years**

Foundation Construction Related Agreements*

**Donation to follow upon completion and acceptance of all work or as stated in the agreement*

Updated September 29, 2023

2023-2024					Estimated	Approval	
Document Type	Campus	Lessor	Lessee	Project	Cost	Date	Approved by
Lease Agreement	LSU	LSU BoS	Tiger Athletic Foundation	PMAC Women's Basketball Locker Room Upgrades	\$1,500,000	7/21/2023	Pres. William F. Tate IV
2022-2023					Estimated	Approval	
Document Type	Campus	Lessor	Lessee	Project	Cost	Date	Approved by
License for Use Agreement	LSU	LSU BoS	Tiger Athletic Foundation	Football Operations Head Coach Office 2022	\$325,000	8/30/2022	Exec. VP Lewis
Lease of Space Agreement	LSU	LSU BoS	Tiger Athletic Foundation	Football Operations Improvements for Elite Level Rehab	\$20,000,000	1/25/2023	Pres. Tate
License for Use Agreement	LSU	LSU BoS	Burden Museum and Gardens, LLC (REFF)	New Storage Building	\$699,500	1/27/2023	Exec. VP Lewis
License for Use Agreement	LSU	LSU BoS	Geology Field Camp Roof Replacement, LLC (REFF)	Geology Field Camp Roof Repairs	\$147,000	9/28/2022	Exec. VP Lewis
License for Use Agreement	LSU	LSU BoS	Geology Field Camp Roadway Repairs, LLC (REFF)	Geology Field Camp Roadway Repairs	\$30,000	9/28/2022	Exec. VP Lewis
License for Use Agreement	LSU	LSU BoS	Tiger Athletic Foundation	PMAC Statue Plaza Site Work & Installation	\$400,000	7/5/2022	Exec. VP Lewis
License for Use Agreement	LSU	LSU BoS	Tiger Athletic Foundation	Soccer Game Field Improvements-2023	\$800,000	3/6/2023	Exec. VP Lewis
License for Use Agreement	LSU	LSU BoS	Tiger Athletic Foundation	Soccer Stadium Barrier Wall 2022	\$95,000	8/30/2022	Exec. VP Lewis
2021-2022					Estimated	Approval	
Document Type	Campus	Lessor	Lessee	Project	Cost	Date	Approved by
License for Use Agreement	LSU	LSU BoS	Tiger Athletic Foundation	Athletics Administration Building Women's Basketball Office Renovation	\$750,000	6/21/2021	Int. Exec VP Torres
License for Use Agreement	LSU	LSU BoS	Tiger Athletic Foundation	Multi-Facility Instant Review Upgrades	\$265,000	12/1/2021	Int. Exec VP Torres
License for Use Agreement	LSU	LSU BoS	Tiger Athletic Foundation	PMAC Women's Basketball Training Room Renovations	\$450,000	8/5/2021	Int. Exec VP Torres
License for Use Agreement	PBRC	LSU BoS	Tiger Athletic Foundation	Tiger Stadium North Structural Repairs 2021	\$100,000	9/8/2021	Int. Exec VP Torres

**Report to LSU Board of Supervisors:
All Campuses Last 3 Years**

Grants of Mineral Rights

Updated September 29, 2023

2023-2024															
Campus that Benefits	Sale Date	State Lease #	Leased to:	Operated by	Release Date	Parish	Section, Township, Range	Acres Bid	Lease Term	Cash Bonus	Price Per Acre	Rentals/Year	Royalty	Accepted Acres	Accepted Bonus
n/a															
2022-2023															
Campus that Benefits	Sale Date	State Lease #	Leased to:	Operated by	Release Date	Parish	Section, Township, Range	Acres Bid	Lease Term	Cash Bonus	Price Per Acre	Rentals/Year	Royalty	Accepted Acres	Accepted Bonus
LSUS	03/09/22	22062	Cypress Energy Co.			Caddo	S37-T17N-13W	50.850	3 yrs.	\$101,700.00	\$2,000.00	\$50,850.00	22.5%	50.850	\$101,700.00
2021-2022															
Campus that Benefits	Sale Date	State Lease #	Leased to:	Operated by	Release Date	Parish	Section, Township, Range	Acres Bid	Lease Term	Cash Bonus	Price Per Acre	Rentals/Year	Royalty	Accepted Acres	Accepted Bonus
n/a															

**Report to LSU Board of Supervisors:
All Campuses**

Other Agreements and Approval Requests

Updated September 29, 2023

2023-2024

Document Type	Campus	Lessor or Seller or Assignor	Lessee or Buyer or Assignee	Related Agreements or Purpose

2022-2023

Document Type	Campus	Lessor or Seller or Assignor	Lessee or Buyer or Assignee	Related Agreements or Purpose
Option Term 3 to State Lease #19-4756	AgCenter	Northeast Educational Development Foundation	AgCenter Rural Development Center	Changes end date to 6/30/2024
Request for approval to lease space through the State Office of Real Estate Lease	HSCS	Alzheimer's Resource Center & Dementia	The Center for Brain Health of LSU Health Shreveport	Approval to submit information needed for a State Lease of Clinic Space
Estoppel Certificate requested by Tulane and the Charity Developer	LSU	LSU Board of Supervisors & the REFF subsidiary	Tulane and the Charity Hospital Redevelopment LLC of Charity Hospital	Estoppel Agreement
Nicholson Gateway Apartments Sprinkler Phase 1 Release	LSU	LSU Board of Supervisors	The Lemoine Company	A receipt & release to allow insurance payment to The Lemoine Company for Phase 1 of work
Nicholson Gateway Apartments Sprinkler Phase 2 Release	LSU	LSU Board of Supervisors	The Lemoine Company	A receipt & release to allow insurance payment to The Lemoine Company Phase 2 of work
Outstanding Participation Agreements with Associated Insurance Certificates	LSU			
Request for JLCB Approval to Increase Construction Costs- LSU Innovation Park Roadway Improvements	LSU	LSU Board of Supervisors		Change Orders and Amendments to existing construction and design contracts
Subordination Agreement for W.S. Dock	LSU	LSU Board of Supervisors	W.S. Dock, LLC	Lessee's Lender's documents

**Report to LSU Board of Supervisors:
All Campuses**

Other Agreements and Approval Requests

Updated September 29, 2023

2021-2022				
Document Type	Campus	Lessor or Seller or Assignor	Lessee or Buyer or Assignee	Related Agreements or Purpose
Option Term 5 to State Lease #19-9975	AgCenter	Corpus Christ Church-Epiphany Catholic Church	AgCenter Extension Center Space	Change end date to 6/22/2022
Amendment 3 Option Term 3- State Lease # 19-9975	AgCenter	Corpus Christ Church-Epiphany Catholic Church	AgCenter Extension Center Space	Adds 5 1-yr. option terms, exercises 1 term and changes the insurance coverage administrator.
Revision to Prior Authorization to enter into CEA & Lease with La. Dept. of Agriculture & Forestry	AgCenter	LSU BoS	Louisiana Dept. of Agriculture and Forestry	Joint Operation and Maintenance of AgChemistry Building
Option Term 1 to State Lease #19-4756	AgCenter	Northeast Educational Development Foundation	AgCenter Rural Development Center	Changes end date to 6/30/2023
Option Term 2 to State Lease #19-4756	AgCenter	Northeast Educational Development Foundation	AgCenter Rural Development Center	Changes end date to 6/30/2022
Option Term 3 to State Lease #19-10302	AgCenter	Town of Vidalia	AgCenter Concordia Extension Service	Changes end date to 6/13/2022
Option Term 4 to State Lease #19-10302	AgCenter	Town of Vidalia	AgCenter Concordia Extension Service	Changes end date to 6/13/2023
Estoppel Certificate for LSU Real Estate and Facilities Foundation & Charity Hospital Redevelopment LLC of Charity Hospital	HCS D	LSU Board of Supervisors & Real Estate & Facilities Foundation	In Favor of 1532 Tulane Partners Holdco, LLC	Estoppel Agreement
Use Agreement for Site Evaluations at Administration Headquarter on Airline Highway, Baton Rouge	HCS D	LSU BoS	East Baton Rouge City Parish, Department of Transportation and Drainage	Conduct a field investigation of the surface pavement adjacent to the existing facility.
Amendment 3 and Option Term	HCS S	Haynes Peavy	HCS S	Clinic Space for the Partners in Wellness Clinic
License for Use of Facilities & Premises	LSU	LSU	CenTrio Energy South, LLC	Provide site evaluation of the property for the Initial Modernization Project
Assignment and Assumption of Lease	LSU	LSU BoS	Gamma Iota Housing Corp of Pi Kappa Phi Fraternity	Transfer of Lease from current housing corporation to a different housing corporation
CEA Implementing Grant Under Community Development Block Grant Disaster Recovery Program	LSU	LSU, City-Parish, REFF & the Office of Community Development		Adding \$5 million in funding for the University Lakes Project.
License for Use of Facilities & Premises	LSU	LSU	Drakes Catering, Inc.	Provide catering services within the Champions Club under its own liquor license
1st Amendment to Lease Agreement	Pennington Biomedical Research Center	PBRC	Our Lady of the Lake Physician Group LLC	Effective Date amended to October 18, 2021 and termination date to October 31, 2022.

**Report to LSU Board of Supervisors:
All Campuses Last 3 Years**

PM60 Projects \$75,000 to \$175,000

Updated September 29, 2023

2023-2024		AMOUNT APPROVED	FUNDS SOURCE	APPROVED BY	APPROVAL DATE
LSU	Carl Maddox Field House Boilers Replacement	\$125,000	Auxiliary Funds	Exec. VP Lewis	08/29/23
	Life Sciences Building Room 610 Renovation	\$115,000	Operational Funds	Exec. VP Lewis	07/19/23
	Evangeline Circle Houseshoe ADA Sidewalk & Site Improvements	\$125,000	Other: Facility Access Fee		07/11/23
	Human Ecology Building Suite 140 Renovations	\$108,500	Other Funds	Exec. VP Lewis	08/14/23
	Tiger Stadium North Stadium Plaza Renovations	\$100,000	Auxiliary Funds	Exec. VP Lewis	07/11/23
	Tiger Stadium Lift Stadium Installation	\$90,239	Auxiliary Funds	Exec. VP Lewis	06/13/23
	Football Indoor Practice Facility Video Board and Outdoor Sound Equipment Room	\$100,000	Auxiliary Funds	Exec. VP Lewis	04/10/23
	Howe Russell Parking Lot Electric Vehicle Chargers	\$100,000	Auxiliary Funds	Exec. VP Lewis	05/08/23
	Total LSU	\$863,739			
AgCenter	Fiber Network Install	\$79,464	Sugar RS Facilities & Administration funds and the Sugar Research Station General Support Frant	Exec. VP Lewis	09/11/23
	Generator- Greenhouses				
	Total AgCenter	\$79,464			
	Total All Campuses	\$943,203			

**Report to LSU Board of Supervisors:
All Campuses Last 3 Years**

PM60 Projects \$75,000 to \$175,000

Updated September 29, 2023

2022-2023		AMOUNT APPROVED	FUNDS SOURCE	APPROVED BY	APPROVAL DATE
LSU	Athletic Administration Bldg. Rm 225 Nutrition Ctr Renovations	\$115,000	Auxiliary Funds	Exec. VP Lewis	09/12/22
	Bernie Moore: Structural Preventative Maintenance	\$165,600	Ausillary Funds	Exec. VP Lewis	10/27/22
	Campus Wide Roadway Seal Coating Rebid	\$150,000	Other Ancillary Self Gen Revenue	Exec. VP Lewis	08/02/22
	Chemistry & Materials Bldg. Rm 168 Renovations	\$132,400	Other Ancillary Self Gen Revenue	Exec. VP Lewis	10/10/22
	Dalrymple Dr: Sidewalk, Drainage & Ramp Improvements	\$160,000	Other Ancillary Self Gen Revenue	Exec. VP Lewis	11/14/22
	Digital Media Center Cyber Security Modification for new Faculty	\$275,000	Other- LED Grant	Exec. VP Lewis	11/14/22
	First Transit Hub Renovation	\$145,000	Auxiliary Funds	Exec. VP Lewis	10/10/22
	Hatcher Hall 3rd Floor Renovations for AAAS	\$85,000	Operational Funds	Exec. VP Lewis	03/13/23
	Hatcher Hall 3rd Floor Renovations for AAAS revision	\$130,000	Operational Funds	Exec. VP Lewis	04/14/23
	Howe Russell Parking Lot Electric Vehicle Chargers	\$100,000	Auxiliary Funds	Exec. VP Lewis	05/08/23
	Law Center: Classroom Modifications for Podiums	\$87,000	Operational Funds	Exec. VP Lewis	03/13/23
	Life Sciences Annex: Suite A363 and A365 Renovation	\$150,000	Operational Funds	Exec. VP Lewis	01/10/23
	MDA Sidewalk & Ramp Improvement	\$110,000	Other: Facility Access Fee	Exec. VP Lewis	12/13/22
	Nicholson Hall 4th Floor Renovations	\$130,000	Operational Funds	Exec. VP Lewis	11/18/22
	PMAC South Plaza Drainage and Paving Improvements	\$150,000	Auxiliary Funds	Exec. VP Lewis	08/02/22
	South Quad Dr. Paving Repairs & Sidewalk Imrprovements	\$120,000	Other Ancillary Self Gen Revenue	Exec. VP Lewis	08/02/22
	SVM East Lot ADA Parking, Sidewalk, Drainage Improvements	\$100,000	Auxiliary Funds	Exec. VP Lewis	08/02/22
	SVM: Main Bldg Library Renovations for Conference Room	\$147,250	Operational Funds	Exec. VP Lewis	03/20/23
	Thomas Boyd Hall: 156 & 156A	\$78,000	Operational Funds	Exec. VP Lewis	12/13/22
	Thomas Boyd Hall: 156 & 156A revision	\$105,000	Operational Funds	Exec. VP Lewis	04/24/23
	TTEC: Auditorium Lighting Replacement	\$90,000	Other: LA DOTD Funds	Exec. VP Lewis	11/14/22
	UREC: Softball Playing Surface Repaairs	\$75,000	Auxiliary Funds	Exec. VP Lewis	10/10/22
	Total LSU	\$2,800,250			
AgCenter	Aquaculture Implement Shed Expansion	\$79,920	Operational Funds	Exec. VP Lewis	12/01/22
	Total AgCenter	\$79,920			
LSUA	Facility Services Fencing Project	\$135,000	Operational Funds	Exec. VP Lewis	05/05/23
	Total LSUA	\$135,000			

**Report to LSU Board of Supervisors:
All Campuses Last 3 Years**

PM60 Projects \$75,000 to \$175,000

Updated September 29, 2023

LSUS	Baseball Outfield Regrading		\$156,676	Auxiliary Funds	Exec. VP Lewis	04/14/23
	Physical Plant Roof Replacement increased cost of low bid		\$104,975	Operational Funds	Exec. VP Lewis	08/10/22
	Science Building Utilities Relocate		\$80,000	Supplementation Appropriation Act 170 of 2022	Exec. VP Lewis	05/25/23
	Student Success Center Advising Area		\$1,430,229	Operational Funds	Exec. VP Lewis	05/17/23
	University Center AHU #3 Replacement		\$78,100	Operational Funds	Exec. VP Lewis	06/30/22
	Total LSUS		\$1,849,980			
HCS D	Lallie Kemp Helipad		\$133,164	Other- Covid-19 ARP Rural Funds	Exec. VP Lewis	09/07/22
	Total HCS D		\$133,164			
	Total All Campuses		\$4,863,314			

**Report to LSU Board of Supervisors:
All Campuses Last 3 Years**

PM60 Projects \$75,000 to \$175,000

Updated September 29, 2023

2021-2022		AMOUNT APPROVED	FUNDS SOURCE	APPROVED BY	APPROVAL DATE
LSU	459 Commons AHU 3 & 4 Chilled & Heating Water Coil Replacement	\$88,964	Auxiliary Funds	Exec. VP Lewis	05/13/22
	Alpha Phi Flooring Renovations	\$80,000	Auxiliary Funds	Exec. VP Lewis	05/24/22
	Braille Signage: Interior ADA Wayfinding Multiple Buildings	\$100,000	Ancillary S-G Funds- Facility Access Fee	Interim Exec. VP Torres	10/19/21
	Design Building Deck Project 2021	\$60,000	Self-Gen: Funds from Alumni donations	Interim Exec. VP Torres	12/20/21
	ECA Activities Building: Interior Painting	\$125,000	Auxiliary Funds	Exec. VP Lewis	02/11/22
	Exterior ADA Building Ramps-Multiple Buildings	\$158,000	Ancillary Self-Gen Funds- Facility Access Fee	Interim Exec. VP Torres	11/03/21
	Hill Farm-Sweet Potato Farm Renovations	\$75,000	S-G: Donor Money-Hill Farm Teaching Facility & Newsom Gardens Project Fund	Interim Exec. VP Torres	11/03/21
	Hodges Hall B16, B16B, B16C, B22 Renovations	\$75,000	Operational Funds	Exec. VP Lewis	04/13/22
	Jesse Coates Hall 3rd Floor Laboratory Lighting	\$75,000	Operational Funds	Exec. VP Lewis	05/05/22
	Life Sciences Bldg: Basement Suite B24- Rms 24A, 24B, 24C & 24D Lab	\$97,605	Operational Funds	Interim Exec. VP Torres	12/10/21
	Life Sciences Bldg: Rooms 387, 387A & 387B Lab Renovations	\$103,000	Operational Funds	Interim Exec. VP Torres	12/01/21
	Music Building Hurricane Ida Roof Repair	\$145,000	Insurance Claim	Interim Exec. VP Torres	10/19/21
	Stephenson Veterinary Hospital Landscape & Irrigation Installation	\$140,000	Self Gen-allocated in Stephenson Veterinary Hospital construction budget	Exec. VP Lewis	03/15/22
	Student Union Suite 109 Renovations for PTS	\$1,000,000	Auxiliary Funds	Exec. VP Lewis	06/14/22
	Student Union: Room 188 Renovation for ITS	\$105,000	Operational Funds	Exec. VP Lewis	05/05/22
	SVM Main Building Access Control System Replacement	\$120,000	Operational Funds	Exec. VP Lewis	03/15/22
	SVM Room 2536, 2538, 2538A Lab Renovations budget increase from \$115,000	\$165,000	Operational Funds	Interim Exec. VP Torres	07/06/21
	SVM: 2202, 2202A, 2203 Casework Installation/Lab Renovations	\$128,000	Operational Funds	Interim Exec. VP Torres	01/13/22
	Tiger Stadium Turf Replacment 2022	\$125,000	Other- allocated for replacement after concerter	Exec. VP Lewis	03/15/22
	Total LSU	\$2,965,569			

**Report to LSU Board of Supervisors:
All Campuses Last 3 Years**

PM60 Projects \$75,000 to \$175,000

Updated September 29, 2023

2021-2022		AMOUNT APPROVED	FUNDS SOURCE	APPROVED BY	APPROVAL DATE
AgCenter	Irrigation Reservoir Weir/Discharge Replacement	\$78,760	Operational Funds	Exec. VP Lewis	05/13/22
	Total LSUA	\$78,760			
LSUA	The Oaks Residential Housing Exterior Repair	\$174,600	Operational Funds	Exec. VP Lewis	05/13/22
	Total LSUA	\$174,600			
LSUE	Health Technology Building Gas System Upgrades & Laboratory Renovation	\$170,000	Cares Act Funds	Exec. VP Lewis	04/28/22
	Total LSUA	\$170,000			
LSUS	Physical Plant (Facility Services) Roofing Replacement	\$75,000	Operational Funds	Exec. VP Lewis	05/13/22
	University Center AHU #3 Replacement	\$78,100	Operational Funds	Exec. VP Lewis	06/30/22
	Storm Damaged Metal Awning Replacement	\$110,000	Operational Funds	Exec. VP Lewis	05/03/22
	Total LSUS	\$263,100			
Total PM60 Project Approvals 2020-2021		\$3,652,029			

**Report to LSU Board of Supervisors:
All Campuses Last 3 Years**

Property Leases

Updated September 29, 2023

2023-2024													
Campus	Lessor or Sublessor	Lessee or Sublessee	Location	Lease Purpose	BoS Appr.	Start	Lease Term	Sq. Ft.	Annual Rental	Dollars / SF	Terms left	Length	Approved by
2022-2023													
Campus	Lessor or Sublessor	Lessee or Sublessee	Location	Lease Purpose	BoS Appr.	Start	Lease Term	Sq. Ft.	Annual Rental	Dollars / SF	Terms left	Length	Approved by
HSCNO	LSU BoS	City of New Orleans		Lease of Airspace in New Orleans between the HSCNO Center for Advanced Learning & Simulation & the Clinical Science Research Building		09/15/22	50 years	11' wide & 55' long about 20' 10" above S. Prieur Street	\$5,130 2022-26, increasing every 4 years		8		President Tate
LSU	LSU BoS	Phi Kappa Theta at LSU House Corporation'	Lot 12 Frternity Row	Amendment & Restatement of Lease, Phi Kappa Theta at LSU of former Sigma Alpha Mu Fraternity House		06/17/22	Thru 6/16/2054		\$10.00				President Tate
2021-2022													
Campus	Lessor or Sublessor	Lessee or Sublessee	Location	Lease Purpose	BoS Appr.	Start	Lease Term	Sq. Ft.	Annual Rental	Dollars / SF	Terms left	Length	Approved by
LSU	LSU	Phi Gamma of Chi Omega House Corp.	Lot 16 Sorority Row	New Lease for land and for Related Construction	n/a	05/03/22	02/09/64	n/a	\$10.00	n/a	n/a	n/a	President Tate
AgCenter	LSU BoS	Fitch Brothers Chorolois	Iberia research Station, Iberia parish	Crop and Cattle Production		06/21/22	06/20/26	209.65 acres	\$1,245.00	n/a	4	1-year	President Tate
AgCenter	LSU BoS	Sligo Road Circle M Ranch, LLC	Pecan Research Station, Caddo	Crop Production	12/05/19	06/22/22	06/21/25	99.956 acres	\$1,475.00	n/a	7	1-year	President Tate
HSCNO	HSCNO	CurVir Biotechnology & NeuResto Therapeutics	Lions Eye Center, New Orleans	Lease Agreement	n/a	07/01/21	06/30/21	229	\$4,122.00		4	1-year	Interim Pres. Galligan
HSCNO	HSCNO	LSU Health Foundation New Orleans	450 S. Claiborne Ave., New Orleans	Adaptive Reuse of Standislaus Hall as a Nursing Home	06/18/21	11/01/21	10/31/22	43,317	\$619,911.50	\$14.30	up to 5 yrs.		President Tate

**Report to LSU Board of Supervisors:
All Campuses Last 3 Years**

Schematic Design

Updated September 29, 2023

2023-2024				
Campus	Project	Architect	Approved by	Approval Date
2022-2023				
Campus	Project	Architect	Approved by	Approval Date
	TAF Lease and Schematic Design of Renovated & Expanded Football Operations Building		LSU Board of Supervisors	10/21/22
2021-2022				
Campus	Project	Architect	Approved by	Approval Date

**Report to LSU Board of Supervisors:
All Campuses Last 3 Years**

Servitudes

Updated September 29, 2023

2023-2024								
Campus/Lessor	Lessee	Servitude or Right-of-Way Location	Acreage	Payment	Length of Term	Type of Document	Approved by	Approval Date
AgCenter-Red River Research Station	Caddo-Bossier Parishes Port Commission	Sections 31 & 32, Township 17, Range 12 West, Bossier Parish	3.292 acres	\$40,000.00	In perpetuity	Servitude	William F. Tate IV	5/24/2023
2022-2023								
Campus/Lessor	Lessee	Servitude or Right-of-Way Location	Acreage	Payment	Length of Term	Type of Document	Approved by	Approval Date
LSU	Entergy	New Medical School Housing, New Orleans			In perpetuity	Right-of-Way to run power	William F. Tate IV	5/13/2022
ExxonMobil Pipeline Co.	LSU	St. Gabriel, Iberville Parish			In perpetuity	Right-of-Way to construct water pipeline to new firing range	William F. Tate IV	4/28/2022
2021-2022								
Campus/Lessor	Lessee	Servitude or Right-of-Way Location	Acreage	Payment	Length of Term	Type of Document	Approved by	Approval Date
AgCenter	CLECO Power LLC	Rapides Parish			In perpetuity	Line Extension Agreement	William B. Richardson	7/14/2021
AgCenter	Boardwalk Louisiana Midstream, LLC	East Baton Rouge Parish			In perpetuity	Pipeline construction for transmission of communication signals	William F. Tate, IV	11/11/2021